



Market Data from a Proven Provider

Report Writer's Handbook

A Handbook for Clients

July 2006

Providing market data and news for more than a quarter century



325 First Street
Alexandria, VA 22314
+1 800 368 2078 | main
+1 703 684 7374 | fax



TABLE OF CONTENTS

1. REPORT WRITER OVERVIEW	3
2. SAMPLE REPORTS.....	4
2.1. Company Summary Reports:	
Key Financials - DataChart	
Three Pager	
One Pager	
2.2. Growth Reports:	
Growth by Sector and Industry	
Growth Characteristics	
2.3. Performance Reports:	
Performance by Sector and Industry	
Performance Single Ticker	
2.4. Other Sample Reports:	
Brief Chart	
Brief Column Chart	
Characteristics By Market Cap	
Equity Characteristics	
Group By Industry	
Portfolio Holding Analytics	
Sorted By XDate	
Ticker List By Volume	
Value Parameters	
3. Custom Reports & The Scheduler.....	7
3.1. Modifying the Sample Reports	
Changing tickers and ticker lists	
Adding and Modifying Columns	
Adding a Logo	
3-2. Setting up reports to run on a schedule	
Scheduler access	
Setting a date and time	
3-3. Printing – Setting Margins	

1. Report Writer Overview

Telemet’s powerful Report Writer is an information resource that brings together all real-time and historic data available on Telemet Orion. The types of data included are pricing information, past earnings, cash flow and balance sheet statements, forward earnings estimates, insider trading and institutional holdings, company measures of valuation and descriptions. Telemet Report Writer is a source of financial data for portfolio managers and analysts. It is also a tool for client and management presentations. Telemet Report Writer is included in your basic Telemet Orion investment platform.

Reports on companies or groups of companies.

Telemet’s powerful Report Writer offers these reports on individual companies, as well as groups of companies such as sectors, industries, portfolios or Telemet ticker lists.

Reports may be viewed, printed, linked to web pages or saved to files.

The reports may be viewed on screen, printed as ‘hard copy’ in both Acrobat ‘pdf’ format and MS Word ‘rtf’ format, incorporated into other electronic documents as ‘web’ pages, downloaded to MS Excel spreadsheets or saved as “Comma Separated Variable” CSV files.

Reports are ready when you are.

Telemet’s powerful Report Writer includes a “Scheduler”. A scheduler sets up reports to run so reports can be printed, nightly or weekly and at any time you specify. Reports will be “on your desk” whenever you want them.

This handbook contains many sample reports for use and helpful hints on how to modify these reports and create new ones. The sample reports as well as the templates that follow are shipped with Telemet Orion and all may be modified to suit the subscriber.

Telemet can also create completely new and original custom reports. Outline what you would like to see on your new report and then ask Telemet about getting it done.

In the next few pages, several sample reports are presented to illustrate the power of Telemet Report Writer. This is followed by helpful hints to modify these and create your own custom reports.

2. Sample Reports

2.1. Company Summary Reports

Key Financials and Charts – DataChart

The DataChart report shows key financial statistics by quarter, institutional ownership, insider trading and a brief overview for an individual company. It also demonstrates historical price charts over a five year and three month period. This tool is similar to reports produced by other vendors who charge thousands more to have access to this functionality. One important note is the ability to customize logo at the top left side of the page. The Report Writer offers you the benefit of inserting your own or your client logo on any report.

Three Pager

The Three Pager report gives a thorough overview of a company. It includes a five year chart, a variety of key revenue, income and dividend data and tables and charts with price to cash flow, price to book, EPS, P/E, and price to sales ratios. While no logo appears on this report, it is easy to add to create your own custom look.

One Pager

This handy one page report contains a subset of data from the three page report described above. It is very quick overview of a company.

Remember reports may be scheduled to run nightly or weekly so they are available to you whenever you want them.



2.2. Growth Reports

Growth by Sector & Industry

Growth by Sector & Industry report shows EPS and EPS growth rates, earnings and revenues and their growth, sales per share, profit margins for a list of equities sorted by Sector and Industry. The list of equities can be customized to include any of your ticker lists or portfolios. The sample report shown in this handbook is an example of the first page of such a report.

Growth Characteristics

Growth Characteristics report shows EPS and EPS Growth Rates, earnings and revenues and their growth, sales per share, profit margins for a list of equities. No sort by sector or industry is included. The list of equities may be any of your ticker lists or portfolios.

2.3. Performance Reports

Performance by Sector & Industry

Performance by Sector & Industry report shows beta, relative strength, earnings and revenues and their growth and return on assets and equity for a list of equities sorted by Sector and Industry. The list of equities can be customized to include your ticker lists or portfolios. The sample report shown on the next page is an example of the first page of such a report.

Performance of Single Company

This report is similar to the “One Pager” shown previously. The top shows a three year price chart with the S&P 500 compared to the stock. Below the chart are valuation, profitability and dividend data. Earnings, revenue and various return figures are also shown along with forward earnings estimates.

Remember reports may be scheduled to run nightly or weekly so they are available to you whenever you want them.



325 First Street
Alexandria, VA 22314
+1 800 368 2078 | main
+1 703 684 7374 | fax



2.4. Other Sample Reports

Brief Charts & Brief Column Charts

These two reports illustrate price charts and company descriptions grouped together. The two reports show that a list of tickers can be the basis of a report.

Characteristics by Market Cap

Characteristics by Market Cap report illustrates a ticker list that could be used to summarize equity characteristics of an industry, sector or portfolio. This list is sorted by market capitalization. P/E, First Call estimates, growth rates, earnings, yield and market cap are shown.

Equity Characteristics

This report illustrates additional data columns that can be linked to a ticker list, a sector or a portfolio. Relative strength, beta, return on equity, return on assets, price to book and various earnings growth rates are shown.

Group by Industry

Group by Industry report illustrates groupings into the S&P industries and a simple average is shown for each group.

Portfolio Holding Analytics

Portfolio Holdings Analytics report shows a portfolio with averages computed at the bottom. Book value, price to book, cash flow, price to cash flow are shown and the weighted average is computed. The weighted average is based upon the market value of the portfolio.

Sorted by Xdate and Ticker List by Volume

Two examples of sorting a ticker list by a parameter. In this case the x-dividend date is the sort field. Obviously any column can be used as the sort.

Value Parameters

The report shows a ticker list with weighted averages at the bottom. Dividend amounts and yield, price to book, price to free cash flow, price to sales are shown and the weighted average is computed.

Remember reports may be scheduled to run nightly or weekly so they are available to you whenever you want them.

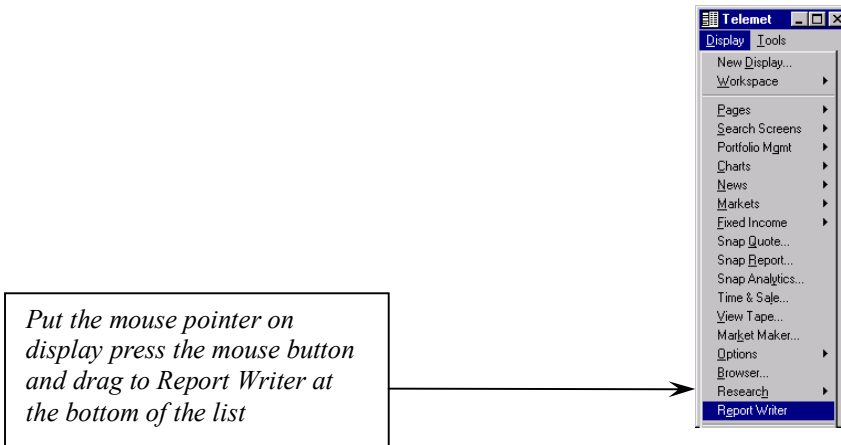
3. Custom Reports & The Scheduler

3.1 Modifying the Sample Reports

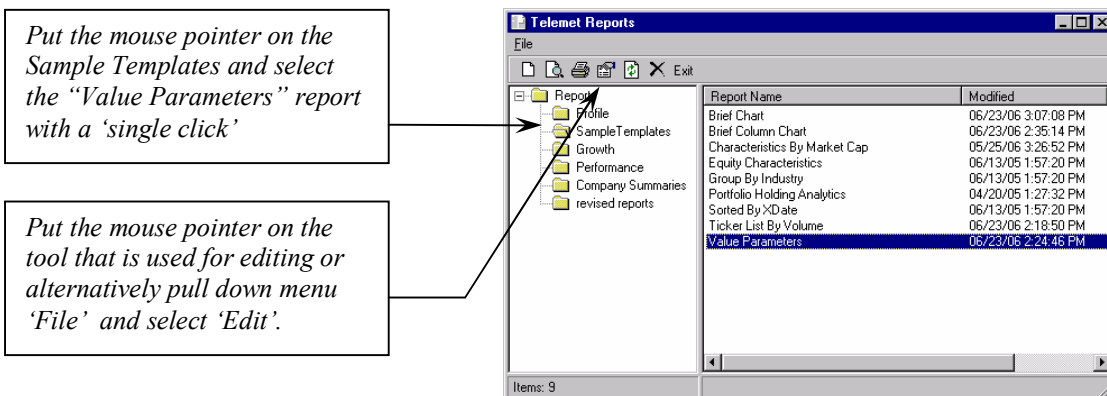
Changing Ticker Lists

Reports may include a ticker list, or ticker, or a “pop-up” box may be used to insert a ticker when the report is run. If a report is scheduled to run at a time when the system is unattended, the report should not use a ‘pop-up’ box, but should have a ticker list or a ticker attached to it.

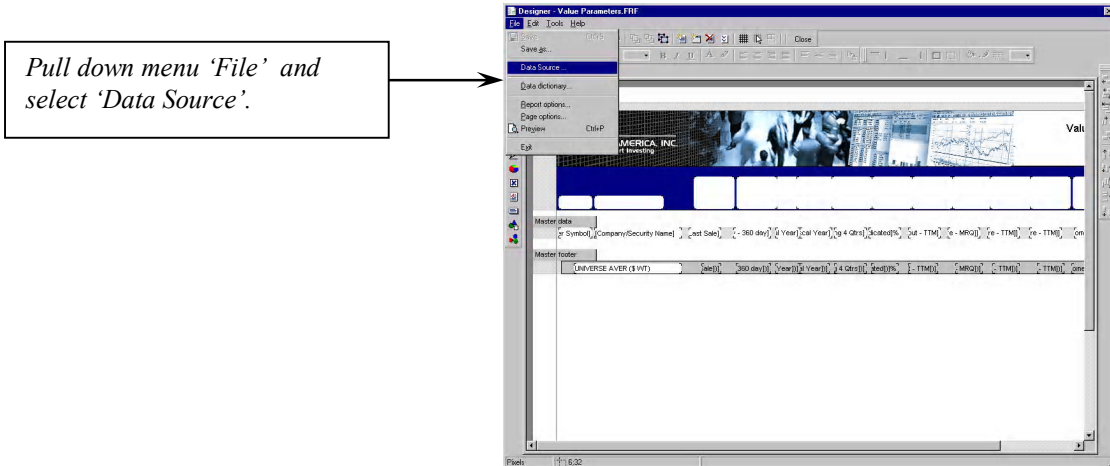
All changes to reports are done in the ‘edit’ mode. Start the Report Writer using the display pull down menu.



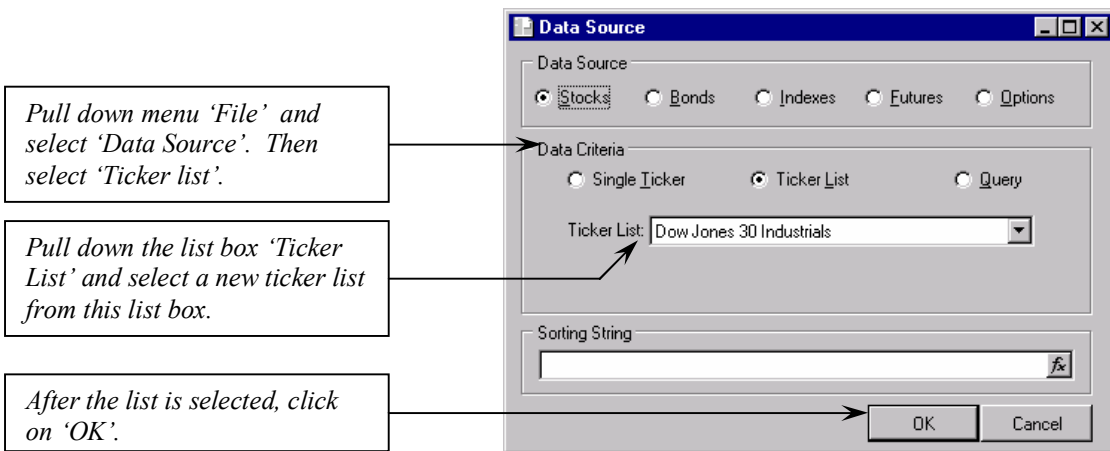
Select the report to modify, in the appropriate folder. For example purposes, we will modify the list on “Value Parameters” Report. And then we will edit this report to change the ticker list it uses.



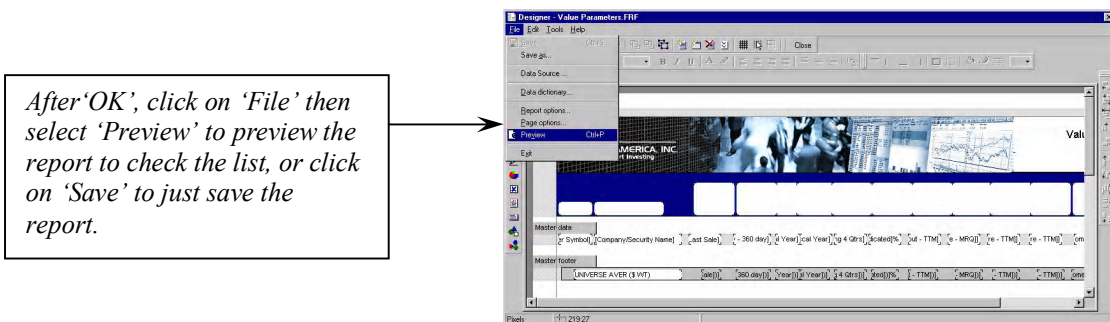
Once in the edit mode, select “File” then “Data Source” from this pull down menu.



Once in the Data Source menu, pick from Data Criteria a ‘ticker list’ and then using the list box, pick the new list for the report and click on ‘OK’.

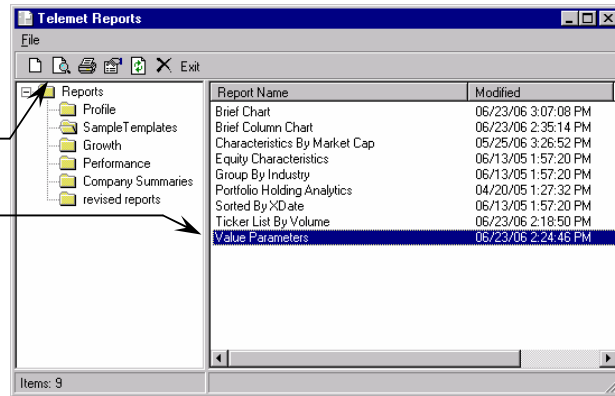


Now preview the report to be sure that you have selected the ticker list desired for the report. Do this by selecting ‘File’ menu item then ‘Preview’ or use the Preview tool on the menu. Skip this step if sure that the new list is the one desired. Just select ‘File’ then ‘Save’ to save the report with the new ticker list attached.



The new report may be previewed after saving it, just select ‘File’ then ‘Preview’ to see the report with the new ticker list attached. Also the ‘Preview’ tool can be used to see the report. Double click on the report name will also pop-up the report.

To see a report, select ‘File’ then ‘Preview’ or use the ‘Preview’ tool or just double click on the report name.



Adding and/or Modifying Columns

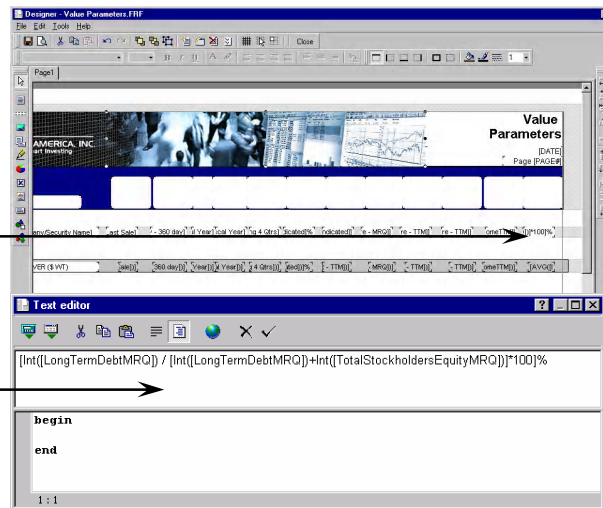
The report may not have the exact data columns that are desired, but modifying a report to include a different or new data column is as quick and easy as point and click.

Reexamine the Value Parameters report discussed above. Open this report in the edit mode. To do this, see the discussion in the previous section.

Once the report is open in the edit mode, let us modify the “% of LT Debt to Capital” column (the last column) and replace it with “Trailing 4Q EPS”.

With the report in the edit mode, double click on the last column.

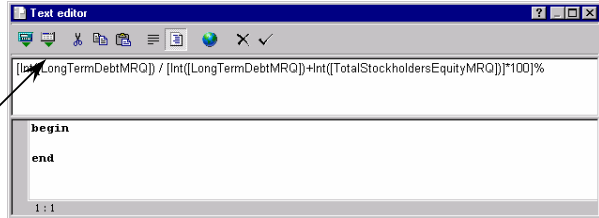
See an edit box, erase the text in this box.





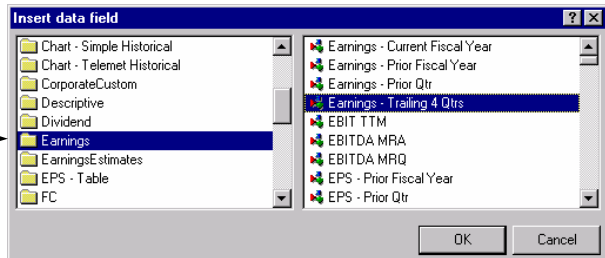
Expressions (mathematical combinations of Telemet data fields) or Telemet data fields may be placed in any column. Select the tool for a data field (no expression is needed because the EPS field a Telemet data field).

See the two tools at the top left, the first is to create expressions, the second is for Telemet data fields. Click on this tool.

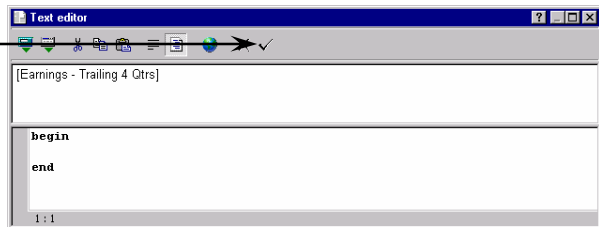


After selecting the tool you will see a list of available Telemet data fields and folders.

See a list of the available Telemet data fields and folders. Select the folder, "Earnings", then see the data fields at right, select "Earnings 4 Q trailing." Then press "OK"

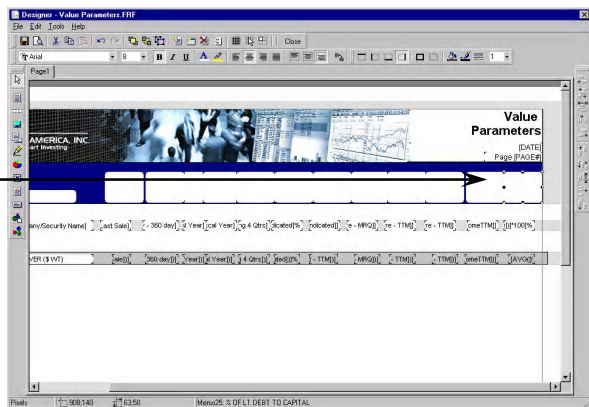


After pressing "OK", see the new expression in the edit box. Point and click on the check mark to insert the data field in the report.



After inserting the Telemet data field in the report, change the heading to reflect the appropriate name of the new Telemet data field.

With the report in the edit mode, double click on the last column header. Note on this report, the text is reversed, so it does not appear in the edit mode, but after double click, it is visible in the edit box.

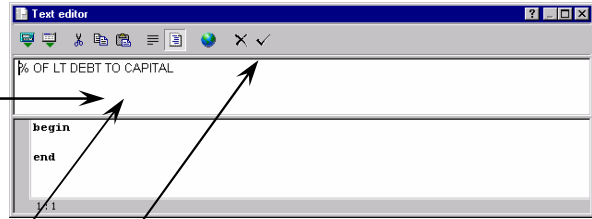




See an edit box, erase the text in this box.

After erasing the text in this box, type in the new text for the header. "4Q Trl EPS"

Point and click on the check mark to insert the text header in the report.

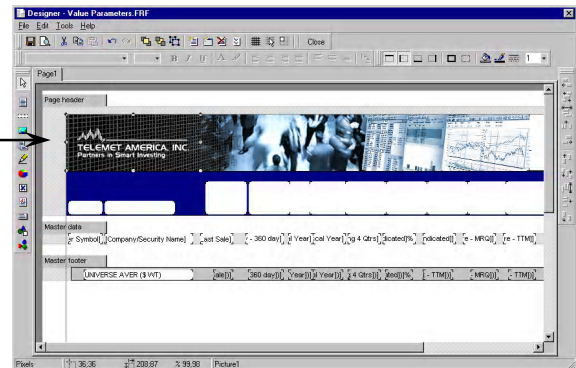


Now, using the tool or the menu item "File then "Preview", preview the report to see the new header and data in the Value Parameters report.

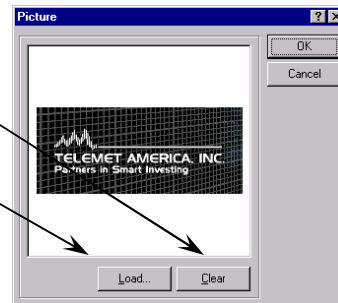
Changing a Logo

Note at the top of the Value Parameters report is a Telemet Logo. Changing this logo is as simple as double clicking on the logo while it is in the edit mode.

Point and double click on the logo while the report is in the edit mode.

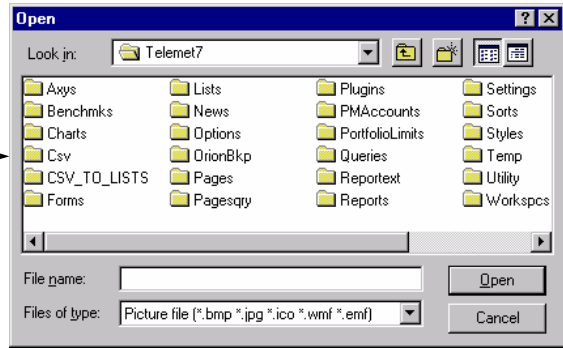


See the edit box as at right. Press the "Clear" button to remove the logo, then press "Load" to load a new one.



325 First Street
Alexandria, VA 22314
+1 800 368 2078 | main
+1 703 684 7374 | fax

After pressing “Load” see the files where you may select a another logo. Logos can be in bmp, jpg, ico, wmf or emf formats. .

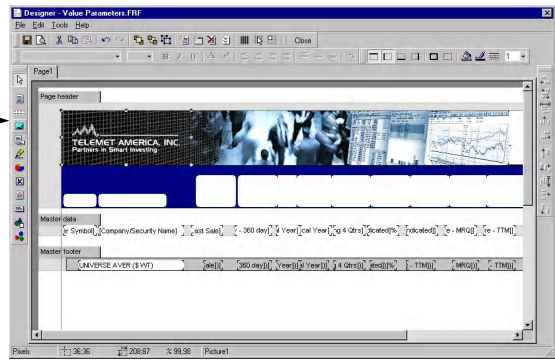


Select the changed logo, the press “Open”. The changed logo appears in the edit box. Press “OK” and the new logo is now in the Value Parameters report.

Adding a brand new logo.

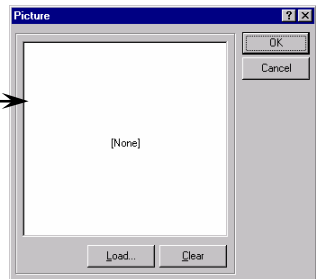
Adding a brand new logo is similar to changing a logo. The only difference is that the picture tool at the left side of the report (when the report is in edit mode) must be used.

With the report in the edit mode, select the picture tool to add a brand new logo somewhere on the report.



Move the mouse pointer to the report while holding down the mouse button. See a box that is used to place the logo on the report. Release the mouse button where you wan the logo and an edit box appears to select a logo.

See the edit box as at right. Press the “Load” to load a brand new logo. As mentioned above, logos can be in bmp, jpg, ico, wmf or emf formats. . click on “OK” when done.



3.2 The Scheduler – Batch Printing

The Scheduler is a convenient way to batch print reports and other Telemet data after hours so that they are ready at a more convenient time without waiting for them to print. Schedule batch printing any day of the week, or once a week at times you select.

Scheduler – Batch Printing Access and setting times and dates

The Scheduler – Batch Printing is accessed from the menu item “Tools”.

Pull down the menu item “Tools” and select “Batch” and Print Setup.

See the edit box as at right. Note with the Batch printer, you can schedule print a ticker list of charts, snap reports, etc. See the Telemet Orion handbook for details.

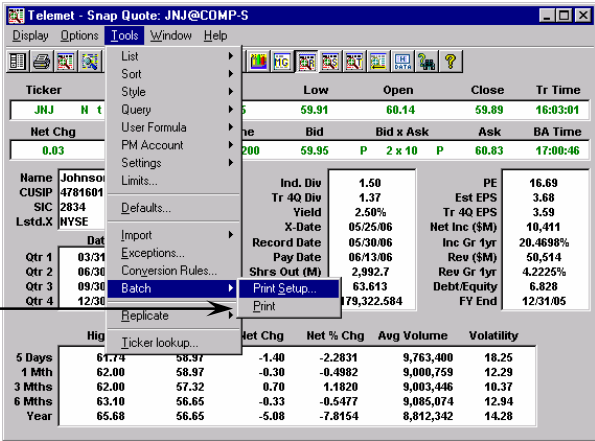
Note in the edit box you select the days of the week and the times that the reports are to print. Put check boxes on the days and use the list box to select the times.

To select the reports, note this area. Click on “Browse” to see the report selections. Select the reports to batch print and then click on “OK”.



IMPORTANT. Once the Batch Printing is set up – eg. time of printing and days for printing are set and the reports selected, activate the Batch Printer.

IMPORTANT: To activate the Scheduler/Batch Printer, be sure to use the menu item "Tools" and select "Print". See a check box next to Print. This confirms that the Scheduler/Batch printer is active.

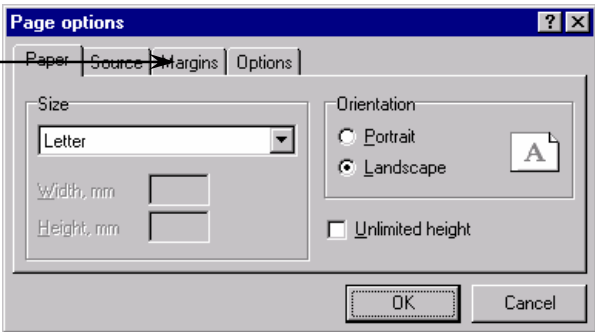


Now according to schedule, the Scheduler will batch print the reports selected.

3.3 Printing - Adjusting Margins

The margins for any report may be adjusted by using the menu item "File" and select "Page Options" when the report is in edit mode. Then select the tab Margins and select the desired margins or "stretch to print area" to make the printed report full size on the page.

Use the menu item "File" and select "Page Options". Click on a tab at the top "Margins".







SAMPLE REPORTS



325 First Street
Alexandria, VA 22314
+1 800 368 2078 | main
+1 703 684 7374 | fax



Johnson & Johnson (JNJ)

\$63.15

NYSE

Health Care

Mkt Cap \$187,774 Mil

Sales \$50,514 Mil

Next EPS: 10/17/2006

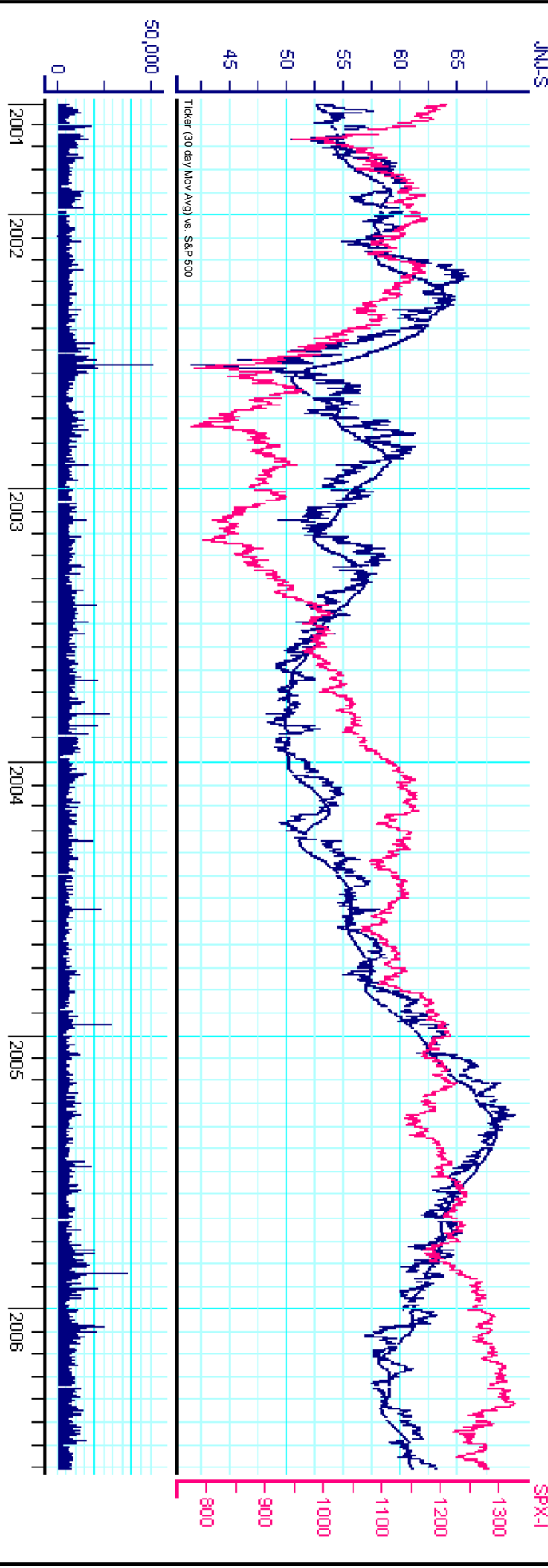
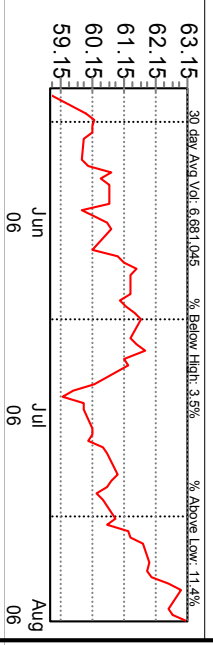
Johnson & Johnson
 One Johnson & Johnson Plaza
 New Brunswick, NJ 08933
 PHONE: 1-732-524-0400
 www.jnj.com/

Div: **\$1.50** Div Shares (Mil): **2,974.4**
 Div Yield: **2.23%** Inst. Own: **63.24%**
 New Div Gr: **16.67%** ROE: **28.58**
 BV/Share: **\$13.83** Beta: **0.51**
 DE: **0.05%** 360 HI - Lo: **65.33 - 56.65**

BRIEF: BUSINESS SUMMARY Johnson & Johnson is engaged in the manufacture and sale of a range of products in the healthcare field. Johnson & Johnson has more than 230 operating companies. The Company operates in three segments: Consumer, Pharmaceutical, and Medical Devices and Diagnostics. Sales of the Company's two largest products, RISPREDAL and PROCIT(R)/EPREX, accounted for approximately 6% and 7% of Johnson & Johnson's total revenues, respectively, during the fiscal year ended January 1, 2006 (fiscal 2005).

Key Financial Ratios

	1Q2004	2Q2004	3Q2004	4Q2004	1Q2005	2Q2005	3Q2005	4Q2005	1Q2006
Gross Profit (Mil)	5,340.0	5,868.0	6,254.0	6,630.0	8,966.0	9,380.0	9,380.0	9,203.0	9,203.0
Gross Profit %	41.61	45.98	75.17	44.65	69.17	70.19	70.19	3.04	2.82
EBITDA (Mil)	2,613.0	3,993.0	3,300.0	3,327.0	2,614.0	4,434.0	2,565	2,459	2,329
EBITDA Margin %	20.36	31.29	26.87	26.38	21.66	33.18	0.08	0.07	0.06
Pre-tax Margin %	20.59	31.66	26.66	27.95	23.66	35.52	270.8	155.82	149.15
Tax Rate %	53.6	27.9	21.3	27.1	15.3	28.4	2.05	1.89	0.82
Shares Outstanding (Mil)	3024	3024	3017	2990	2993	2974	2974	0.89	1.31
Total Cash (Mil)	9,203.0	8,396.0	12,186.0	14,826.0	16,055.0	16,055.0	16,922.0	16,922.0	16,922.0
Total Cash per Share	3.04	2.82	4.03	4.96	5.36	5.36	5.66	5.66	5.66
Total Debt (Mil)	2,565	2,459	2,329	2,139	2,017	1,980	1,980	1,980	1,980
Debt / Equity %	0.08	0.07	0.06	0.05	0.05	0.05	0.05	0.05	0.05
Interest Coverage	43.75	270.8	226.8	155.82	149.15	288.44	288.44	288.44	288.44
Inventories	1.31	0.83	0.89	0.89	0.89	0.89	0.89	0.89	0.89
Cash Flow per Share	1.31	0.83	0.89	0.89	0.89	0.89	0.89	0.89	0.89



Yearly Data					Quarterly Data					P / E		INSTITUTIONAL OWNERSHIP				
	2001	2002	2003	2004	2005	2Q2004	3Q2004	4Q2004	1Q2005	2Q2005	3Q2005	4Q2005	1Q2006	2Q2006	3Q2006	4Q2006
EPS	1.84	2.18	2.40	2.84	3.46	0.82	0.78	0.41	0.97	0.89	0.87	0.73	1.10	0.9481	0.93	0.79
% Change	8.2	18.5	10.1	18.3	21.8	13.0	-33.9	16.9	8.5	11.5	78.0	13.4	6.5	6.9	8.2	
Revenue (Mil \$)	33,004	36,298	41,862	47,348	50,514	11,484	11,553	12,752	12,832	12,762	12,310	12,610	12,992	13,363		
% Change	13.3	10.0	15.3	13.1	6.7	-8.9	10.5	13.3	11.0	11.1	6.6	-1.1	1.2	4.7		
PE Low-High	29-34	24-23	19-22	21-23	16-16	17-19	18-19	19-22	21-23	21-23	20-21	17-19	16-18	16-17		
Institutional Ownership %	61.4	62.8	62.7	64.3	69.6	62.5	67.8	64.3	64.4	65.6	69.6	69.6	69.6	63.2		
ROE %	7.3	7.3	7.3	3.99	6.08	9.45	8.85	8.01	3.99	9.22	8.10	7.64	6.08	8.75		
Net Profit Margin %	17.17	18.32	17.19	17.97	20.61	21.40	20.26	9.54	22.81	20.97	21.32	17.31	25.44	21.10		
Trailing P/E	17.6x	17.6x	17.6x	17.6x	17.6x	17.6x	17.6x	17.6x	17.6x	17.6x	17.6x	17.6x	17.6x	17.6x		
Forward P/E	18.2x	18.2x	18.2x	18.2x	18.2x	18.2x	18.2x	18.2x	18.2x	18.2x	18.2x	18.2x	18.2x	18.2x		
First Call Summary	15.7x	15.7x	15.7x	15.7x	15.7x	15.7x	15.7x	15.7x	15.7x	15.7x	15.7x	15.7x	15.7x	15.7x		
Current Rec.	0	0	0	0	0	0	0	0	0	0	0	0	0	0		
Future Growth	10%	10%	10%	10%	10%	10%	10%	10%	10%	10%	10%	10%	10%	10%		
High Growth	0%	0%	0%	0%	0%	0%	0%	0%	0%	0%	0%	0%	0%	0%		
Low Growth	0%	0%	0%	0%	0%	0%	0%	0%	0%	0%	0%	0%	0%	0%		
# of Bidders	0	0	0	0	0	0	0	0	0	0	0	0	0	0		
INSIDER TRADING (Prev 6 months)																
Net Insider Trades	3.0	3.0	3.0	3.0	3.0	3.0	3.0	3.0	3.0	3.0	3.0	3.0	3.0	3.0		
# Buy Transactions	10	10	10	10	10	10	10	10	10	10	10	10	10	10		
# Sell Transactions	4.0	4.0	4.0	4.0	4.0	4.0	4.0	4.0	4.0	4.0	4.0	4.0	4.0	4.0		
# Shares Bought	0.0093 Mil	0.0093 Mil	0.0093 Mil	0.0093 Mil	0.0093 Mil	0.0093 Mil	0.0093 Mil	0.0093 Mil	0.0093 Mil	0.0093 Mil	0.0093 Mil	0.0093 Mil	0.0093 Mil	0.0093 Mil		
# Shares Sold	0.0096 Mil	0.0096 Mil	0.0096 Mil	0.0096 Mil	0.0096 Mil	0.0096 Mil	0.0096 Mil	0.0096 Mil	0.0096 Mil	0.0096 Mil	0.0096 Mil	0.0096 Mil	0.0096 Mil	0.0096 Mil		

Johnson & Johnson (JNJ) NYSE

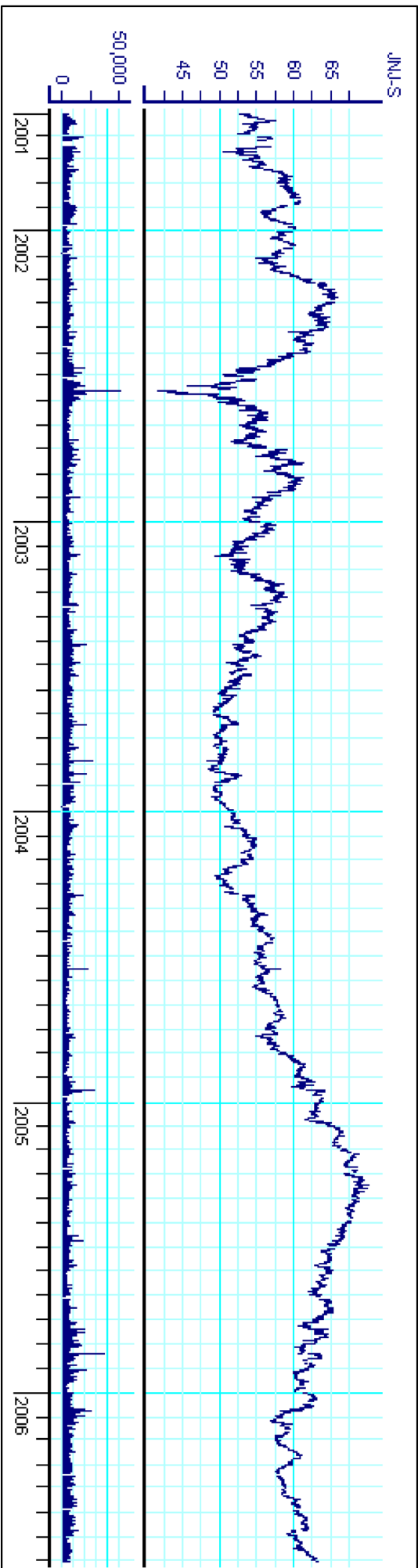
Johnson & Johnson
 One Johnson & Johnson Plaza
 New Brunswick, NJ 08933
 PHONE: 1 732 524-0400
 www.jnj.com/

Aug 03, 2006.....

63.24

Price Change - YTD
 Dividend Yld
 P/E.....

5.22%
 2.37%
 17.62



Capitalization

% LT Debt to Total Cap 4.59%
 Owned by Institutions 63.24%
 Market Capitalization 188101.06
 Avg Daily Vol (Last 30 Days) 6681045.00

Business Overview

BRIEF: BUSINESS SUMMARY Johnson & Johnson is engaged in the manufacture and sale of a range of products in the healthcare field. Johnson & Johnson has more than 230 operating companies. The Company operates in three segments: Consumer, Pharmaceutical, and Medical Devices and Diagnostics. Sales of the Company's two largest products, RISPEDAL and PROCRI(R)/EPREX, accounted for approximately 6% and 7% of Johnson & Johnson's total revenues, respectively, during the fiscal year ended January 1, 2006 (fiscal 2005).

Earnings

Latest Quarter 0.95 up 6.53%
 Latest 12 Months 3.59 %

Growth Rates
 5 Yr Historical 17.24%

First Call Consensus

Current Quarter 0.93 up 34.78%
 Current Fiscal Year 3.69 up 39.25%
 Next Fiscal Year 4.02 up 8.94%

LT Future 12.00%

Revenues

Latest Quarter 13,363.00 Mill up 4.71%
 Latest 12 Months 50,674.00 Mill up 1.55%

5 Yr Historical 12.00%

Dividends

Indicated Rate & Yield 1.50 2.37%
 Increases Last 5 Years 5.00

5 Yr Historical 11.21%

Key Ratios & Measures

P/E 17.62
 Price to Book 4.57
 Price to Cash flow 17.11
 Price to Sales 3.76
 Return on Equity 28.58%

Current 16.67%

BETA S&P 500

.51

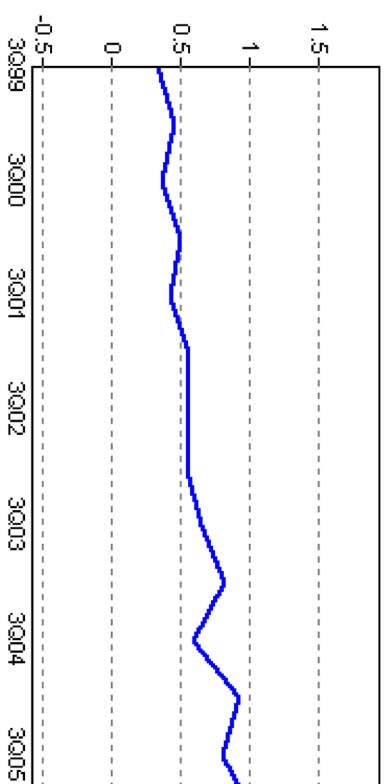
Earnings Per Share

	2000	2001	2002	2003	2004	2005	2006
Mar	0.47	0.53	0.59	0.69	0.83	0.97	1.10
Jun	0.44	0.48	0.54	0.40	0.82	0.89	0.95
Sep	0.43	0.49	0.60	0.69	0.78	0.87	
Dec	0.30	0.36	0.48	0.62	0.41	0.73	
Year	1.70	1.84	2.18	2.40	2.84	3.46	3.69e
Year to Year		8 %	18 %	10 %	18 %	22 %	

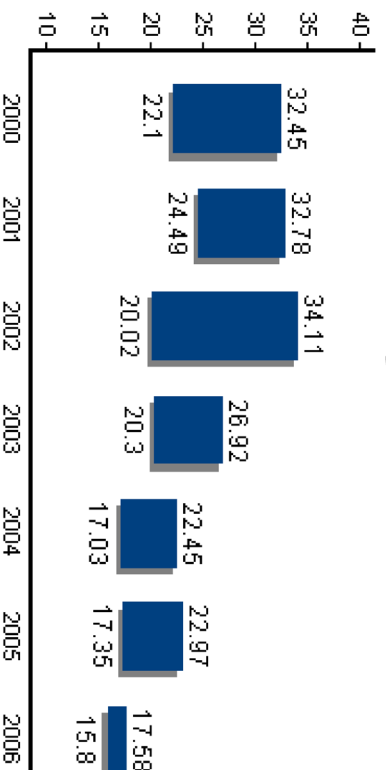
Mean Estimates: First Call

(Quarterly numbers may not add to annuals)

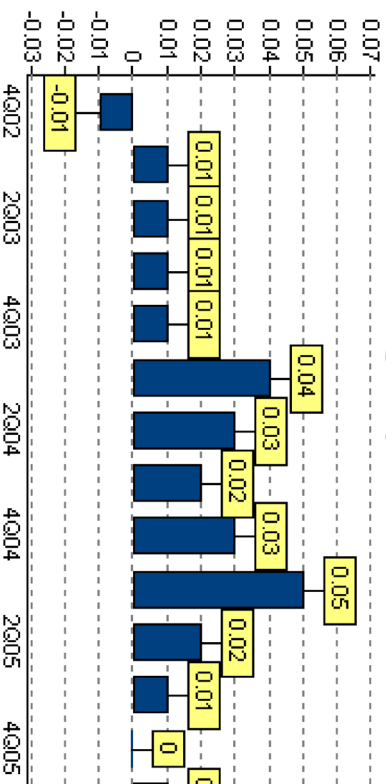
Earnings - 4 Quarter Moving Average - JNJ



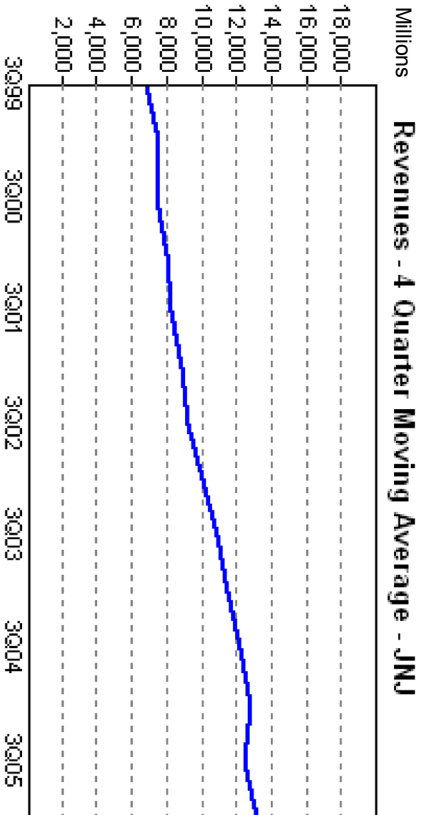
PE History 7 Year - JNJ



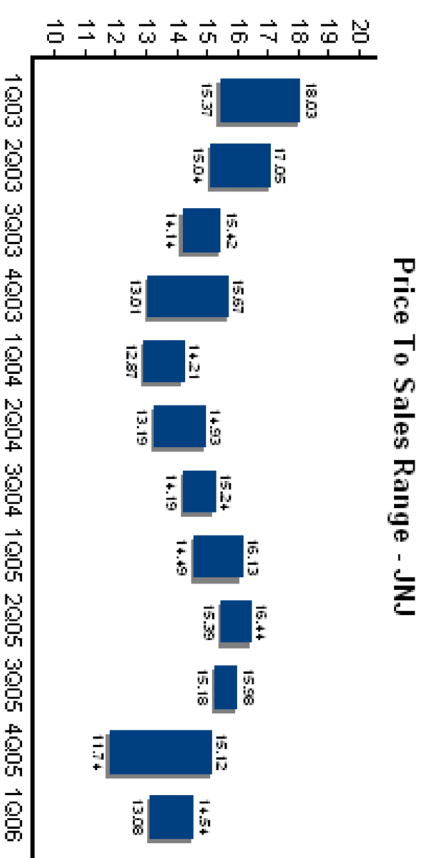
Earnings Surprise - JNJ

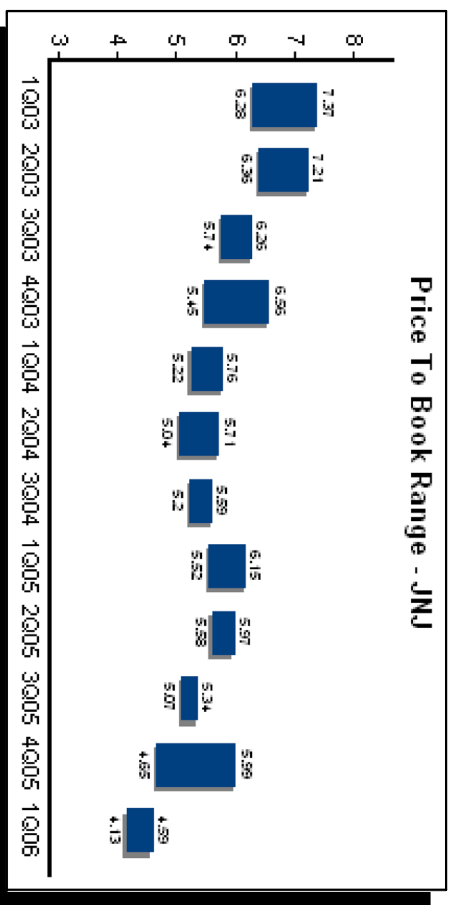
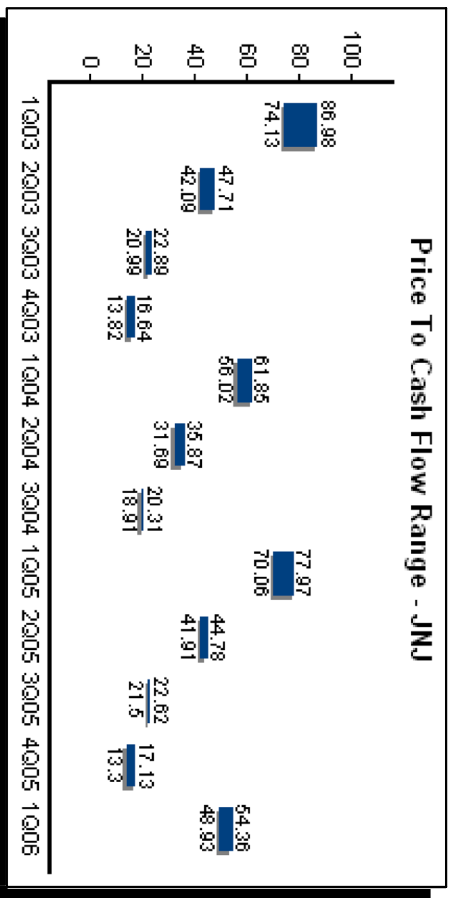
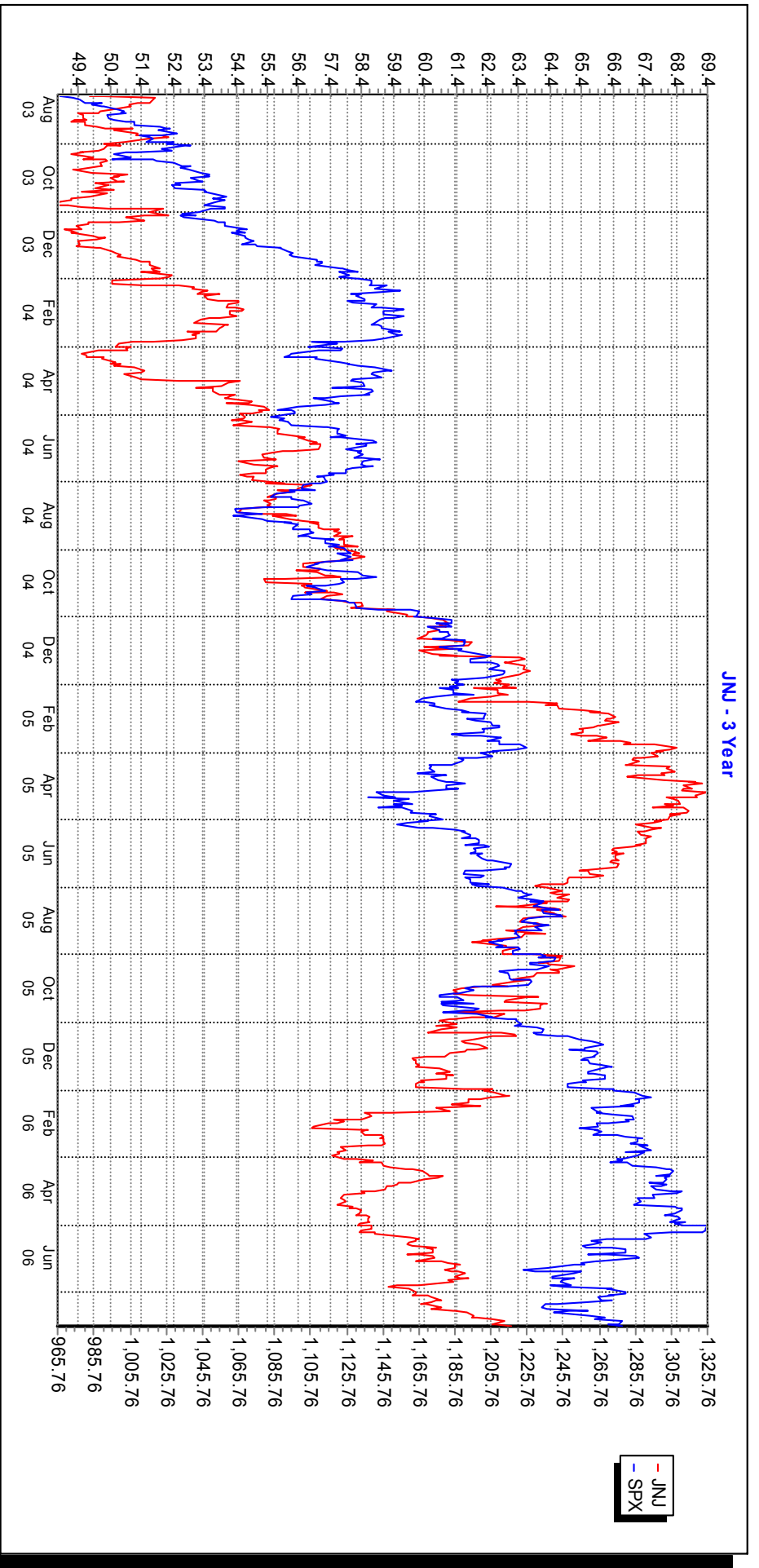


Revenues - 4 Quarter Moving Average - JNJ



Price To Sales Range - JNJ





Johnson & Johnson (JNJ) NYSE

Johnson & Johnson
 One Johnson & Johnson Plaza
 New Brunswick, NJ 08933
 PHONE: 1 732 524-0400
 www.jnj.com/

Aug 02, 2006 **63.15**
 Price Change - YTD 5.07%
 Dividend Yld 2.38%
 P/E 17.59



Capitalization

% LT Debt to Total Cap 4.59%
 Owned by Institutions 63.24%
 Market Capitalization 187833.36
 Avg Daily Vol (Last 30 Days) 6646261.00

Earnings

Latest Quarter
 Latest 12 Months

\$ %
 0.95 up 6.53%
 3.59 up 17.7%

Growth Rates

5 Yr Historica
 17.27%

Business Overview

BRIEF: BUSINESS SUMMARY Johnson & Johnson is engaged i

First Call Concensu

Current Quarter
 Current Fiscal Year
 Next Fiscal Year

0.93 up 34.78%
 3.69 up 39.25%
 4.02 up 8.94%

LT Future

12.00%

Revenues

Latest Quarter
 Latest 12 Months

13,363.00 up 4.71%
 Mil up 1.55%

5 Yr Historica

11.41%

Dividends

Indicated Rate & Yield
 Increases Last 5 Years

50,674.00 Mil
 1.50 Mil 2.38%
 5.00 16.67%

5 Yr Historica

16.67%

Key Ratios & Measure

P/E
 Price to Book
 Price to Cash flow
 Price to Sales
 Return on Equity

Current

17.59
 4.57
 17.08
 3.75
 28.58%

BETA S&P 500

.51



Telemet Orion Growth by Industry and Sector Report

Page: 1

8/3/2006

Consumer Discretionary

Automobiles

Ticker	Company Name	Last Sale	EPS Tr. 4 qtrs	EPS Nxt. FY	EPS % Chng Cur v. Fut	Ern. 5 yr Growth	Revenue TTM	Rev 1 yr Growth	Rev 5 yr Growth	Rev per Share TTM	Sales/ Share G1yr	Profit Margin TTM	Profit Margin G1yr	Market Cap mil
GM	General Motors Corp.	30.91	-15.84	5.08	19.69%	-20.93	199,076.00	3.95	2.26	351.57	.92%	-4.46%	.00%	17,634.53
Industry Average:			-15.84	5.08	19.69%	-20.93	199,076.00	3.95	2.26	351.57	.92%	-4.46%	.00%	17,634.53

Hotels Restaurant & Leisure

Ticker	Company Name	Last Sale	EPS Tr. 4 qtrs	EPS Nxt. FY	EPS % Chng Cur v. Fut	Ern. 5 yr Growth	Revenue TTM	Rev 1 yr Growth	Rev 5 yr Growth	Rev per Share TTM	Sales/ Share G1yr	Profit Margin TTM	Profit Margin G1yr	Market Cap mil
MCD	McDonalds Corporatio	35.74	1.97	2.43	4.12%	-16.52	20,758.30	6.63	-5.23	16.32	-0.07%	12.04%	.90%	45,432.69
Industry Average:			1.97	2.43	4.12%	-16.52	20,758.30	6.63	-5.23	16.32	-0.07%	12.04%	.90%	45,432.69

Media

Ticker	Company Name	Last Sale	EPS Tr. 4 qtrs	EPS Nxt. FY	EPS % Chng Cur v. Fut	Ern. 5 yr Growth	Revenue TTM	Rev 1 yr Growth	Rev 5 yr Growth	Rev per Share TTM	Sales/ Share G1yr	Profit Margin TTM	Profit Margin G1yr	Market Cap mil
DIS	Walt Disney Company	29.73	1.34	1.64	9.76%	34.57	32,330.00	36.53	7.70	15.82	1.45%	7.98%	-3.3%	59,162.70
Industry Average:			1.34	1.64	9.76%	34.57	32,330.00	36.53	7.70	15.82	1.45%	7.98%	-3.3%	59,162.70

Specialty Retail

Ticker	Company Name	Last Sale	EPS Tr. 4 qtrs	EPS Nxt. FY	EPS % Chng Cur v. Fut	Ern. 5 yr Growth	Revenue TTM	Rev 1 yr Growth	Rev 5 yr Growth	Rev per Share TTM	Sales/ Share G1yr	Profit Margin TTM	Profit Margin G1yr	Market Cap mil
HD	Home Depot Inc.	34.07	2.84	3.40	9.71%	16.59	83,999.00	51.23	11.32	39.27	-4.8%	7.23%	-1.87%	72,296.54
Industry Average:			2.84	3.40	9.71%	16.59	83,999.00	51.23	11.32	39.27	-4.8%	7.23%	-1.87%	72,296.54
Sector Average:			-2.42	3.14	10.82%	3.43	84040.83	24.58	4.01	105.7	0.46%	5.70%	-0.32	48,631.61

Consumer Staples

Beverages

Ticker	Company Name	Last Sale	EPS Tr. 4 qtrs	EPS Nxt. FY	EPS % Chng Cur v. Fut	Ern. 5 yr Growth	Revenue TTM	Rev 1 yr Growth	Rev 5 yr Growth	Rev per Share TTM	Sales/ Share G1yr	Profit Margin TTM	Profit Margin G1yr	Market Cap mil
KO	Coca-Cola Company	44.13	2.12	2.50	7.60%	12.10	23,290.00	4.68	4.41	9.81	-23.83%	21.52%	-1.7%	103,793.76
Industry Average:			2.12	2.50	7.60%	12.10	23,290.00	4.68	4.41	9.81	-23.83%	21.52%	-1.7%	103,793.76

Food & Drug Retailing

Ticker	Company Name	Last Sale	EPS Tr. 4 qtrs	EPS Nxt. FY	EPS % Chng Cur v. Fut	Ern. 5 yr Growth	Revenue TTM	Rev 1 yr Growth	Rev 5 yr Growth	Rev per Share TTM	Sales/ Share G1yr	Profit Margin TTM	Profit Margin G1yr	Market Cap mil
WMT	Wal-Mart Stores Inc.	44.58	2.73	3.29	11.25%	12.54	324,442.00	10.24	9.46	77.68	.91%	3.51%	-2.1%	185,898.60
Industry Average:			2.73	3.29	11.25%	12.54	324,442.00	10.24	9.46	77.68	.91%	3.51%	-2.1%	185,898.60

Household Products

Ticker	Company Name	Last Sale	EPS Tr. 4 qtrs	EPS Nxt. FY	EPS % Chng Cur v. Fut	Ern. 5 yr Growth	Revenue TTM	Rev 1 yr Growth	Rev 5 yr Growth	Rev per Share TTM	Sales/ Share G1yr	Profit Margin TTM	Profit Margin G1yr	Market Cap mil
PG	Procter & Gamble Co.	59.19	2.68	2.99	12.04%	18.50	64,638.00	16.58	14.17	20.80	-8.7%	12.81%	1.76%	207,786.50
Industry Average:			2.68	2.99	12.04%	18.50	64,638.00	16.58	14.17	20.80	-8.7%	12.81%	1.76%	207,786.50

Tobacco

Ticker	Company Name	Last Sale	EPS Tr. 4 qtrs	EPS Nxt. FY	EPS % Chng Cur v. Fut	Ern. 5 yr Growth	Revenue TTM	Rev 1 yr Growth	Rev 5 yr Growth	Rev per Share TTM	Sales/ Share G1yr	Profit Margin TTM	Profit Margin G1yr	Market Cap mil
MO	Altria Group Inc	80.21	5.40	5.65	5.84%	2.42	98,591.00	7.88	4.47	47.13	-3.1%	11.48%	2.23%	168,521.21
Industry Average:			5.40	5.65	5.84%	2.42	98,591.00	7.88	4.47	47.13	-3.1%	11.48%	2.23%	168,521.21

Sector Average:

3.23 3.61 9.18% 11.39127740.25 9.85 8.13 38.85 -6.02%12.33% 0.90 166,500.02

Energy

Ticker	Company Name	Last Sale	EPS Tr. 4 qtrs	EPS Nxt. FY	EPS % Chng Cur v. Fut	Ern. 5 yr Growth	Revenue TTM	Rev 1 yr Growth	Rev 5 yr Growth	Rev per Share TTM	Sales/ Share G1yr	Profit Margin TTM	Profit Margin G1yr	Market Cap mil
OSG	Overseas Shipholding	64.72	10.83	6.29	-53.90%	16.79	985.50	14.32	65.97	24.93	3.21%	43.46%	-9.9%	2,560.91
WMB	Williams Companies	24.57	.41	1.41	32.62%	29.90	12,657.10	36.19	5.55	21.34	.52%	1.93%	12.26%	14,915.78
XOM	Exxon Mobil Corporati	68.51	5.86	6.30	-6.3%	43.57	377,609.00	20.84	19.77	60.13	.35%	9.71%	1.12%	420,061.25
Industry Average:			5.70	4.67	-15.71%	30.09	130,417.20	23.79	30.43	35.47	1.36%	18.37%	4.13%	145,845.98
Sector Average:			5.70	4.67	-7.30%	30.09130417.20		23.79	30.43	35.47	1.36%18.37%		4.13	145,845.98

Financials**Consumer Finance**

Ticker	Company Name	Last Sale	EPS Tr. 4 qtrs	EPS Nxt. FY	EPS % Chng Cur v. Fut	Ern. 5 yr Growth	Revenue TTM	Rev 1 yr Growth	Rev 5 yr Growth	Rev per Share TTM	Sales/ Share G1yr	Profit Margin TTM	Profit Margin G1yr	Market Cap mil
AXP	American Express Co.	51.68	2.91	3.37	11.28%	17.40	24,927.00	-9.87	5.44	19.85	.53%	14.69%	-3.39%	65,013.44
Industry Average:			2.91	3.37	11.28%	17.40	24,927.00	-9.87	5.44	19.85	.53%	14.69%	-3.39%	65,013.44



TELEMET AMERICA, INC.
Partners in Smart Investing

**Growth Characteristics by
Telemet
8/3/2006**

Ticker	Company Name	Prev. YR EPS	Est EPS		EPS % Chng 04 to 05	EPS % Chng 05 to 06	EPS % Chng 06 to 07	EPS Growth Rate	Earnings Growth Rt 5 yr	Ems LT Future Gr Rate	Rev % Chg 02 to 03	Rev Last Qtr v Year Ago	Rev. 5 yr Growth	Gross Profit Margin	Return on Equity	Div. 5 yr Growth
			Cur FY	Est Nxt FY												
MMM	3M Company	4.12	4.48	4.98	9.87	8.74	11.16	19.5%	19.50%	12%	11.63	8.3	8.74%	51.08%	31.75%	9.9%
AA	Alcoa Inc	1.4	3.26	3.3	-6.04	132.86	1.23	63.28%	63.28%	12%	6.12	17.68	9.24%	21.56%	13.47%	*0.00%
AXP	American Express Co.	2.97	2.99	3.37	10.82	.67	12.71	17.4%	17.40%	13.3%	8.65	-16.39	5.44%	N/A%	30.37%	13.45%
AIG	American Intl Group	3.99	5.48	6.13	6.97	37.34	11.86	18.97%	18.97%	14.5%	-99.88	.21	15.7%	N/A%	14.61%	37.63%
BA	Boeing Company	3.2	2.55	4.54	39.13	-20.31	78.04	173.58	173.58%	11%	-6.63	9.83	-22%	-44.8%	18.91%	13.28%
CAT	Caterpillar Inc	4.04	5.49	6.18	40.28	35.89	12.57	94.71%	94.71%	12%	12.96	12.63	22.47%	28.07%	37.18%	10.69%
C	Citigroup, Inc.	4.76	4.28	4.62	46.01	-10.08	7.94	14.33%	14.32%	12%	-16.33	3.02	6.07%	N/A%	21.01%	33.1%
KO	Coca-Cola Company	2.04	2.31	2.5	2	13.24	8.23	12.1%	12.10%	10%	7.56	2.63	4.41%	64.92%	30.65%	12.03%
DD	DuPont de Nemour	2.07	2.87	3.16	16.95	38.65	10.1	-23.41%	-23.41%	10%	13.08	.68	4.89%	29.45%	17.76%	1.26%
PFE	Pfizer Inc.	1.09	2	2.13	-26.85	83.49	6.5	13.43%	13.43%	11%	39.59	-3.29	13.17%	83.67%	17.8%	15.64%
XOM	Exxon Mobil Corporati	5.71	6.34	6.3	46.79	11.03	-.63	43.57%	43.57%	7%	20.65	8.44	19.77%	N/A%	33.63%	7.51%
GE	General Electric Co	1.54	1.99	2.26	-3.14	29.22	13.57	6.33%	6.33%	10%	1.89	-3.98	5.08%	33.44%	15.41%	8.33%
GM	General Motors Corp.	-15.13	4.08	5.08	-405.66	-126.97	24.51	-20.93%	-20.93%	5%	-5	14.14	2.26%	87.37%	-46.77	-7.26%
HPQ	Hewlett-Packard Co	.82	2.06	2.32	-28.7	151.22	12.62	16.27%	16.27%	10%	.99	4.56	14.84%	-52.14	9.81%	*0.00%
HD	Home Depot Inc.	2.72	3.07	3.4	20.35	12.87	10.75	16.59%	16.59%	13%	11.28	13.11	11.32%	33.56%	23%	27.9%
HON	Honeywell Intl Inc	1.94	2.51	2.92	15.48	29.38	16.33	16.06%	16.06%	13.2%	3.72	12.21	6.68%	-53.6%	17.49%	3.5%
INTC	Intel Corporation	1.4	.8	1.05	20.69	-42.86	31.25	38.74%	28.21%	15%	12.62	-13.24	9.15%	58.42%	21.66%	50.34%
IBM	IBM Corp	4.91	5.85	6.36	-.41	19.14	8.72	12.6%	12.60%	10%	9.79	-1.71	2.55%	41.36%	26.02%	13.23%
VZ	Verizon Communication	2.65	2.55	2.68	-5.02	-3.77	5.1	42.1%	42.10%	5.3%	.19	25.11	4.66%	64.74%	13.62%	1.29%
JPM	JPMorgan Chase & Co	2.38	3.57	3.95	53.55	50	10.64	127.53	127.53%	11%	25.44	23.82	41.18%	N/A%	8.71%	*0.00%
JNJ	Johnson & Johnson	3.46	3.69	4.02	21.83	6.65	8.94	17.24%	17.24%	12%	15.33	4.71	11.21%	65.62%	28.58%	16.67%
MCD	McDonalds Corporatio	2.04	2.33	2.43	13.97	14.22	4.29	-16.52%	-16.52%	8.1%	11.26	6.21	-5.23%	20.43%	16.89%	35.49%
MRK	Merck & Co. Inc.	2.1	2.46	2.44	-19.54	17.14	-.81	-10.85%	-10.85%	3%	4.85	.89	-26.51%	N/A%	26.59%	2.13%
MSFT	Microsoft Corporation	.69	1.45		-8	110.14	-100	10.44%	10.44%	11.3%	13.47	13.31	11.84%	83.75%	29.5%	*0.00%
MO	Altria Group Inc	4.99	5.32	5.65	9.43	6.61	6.2	2.42%	2.42%	9%	1.77	3.12	4.47%	62.46%	31.93%	7.75%
PG	Procter & Gamble Co.	2.66	2.63	2.99	14.66	-1.13	13.69	18.5%	18.50%	11%	7.8	20.74	14.17%	39.96%	20.27%	11.4%
T	AT&T Inc.	1.42	2.22	2.46	-20.67	56.34	10.81	-7.03%	-7.03%	14%	-6.12	54.52	2.53%	55.67%	11.23%	12%
UTX	United Technologies	3.03	3.66	4.11	9.78	20.79	12.3	15%	15.00%	10%	10	9.97	14.46%	-44.54	19.36%	19.88%
WMT	Wal-Mart Stores Inc.	2.68	2.92	3.29	11.2	8.96	12.67	12.54%	12.54%	14%	N/A	12.26	9.46%	23.97%	22.31%	23.98%
DIS	Walt Disney Company	1.22	1.48	1.64	8.93	21.31	10.81	34.57%	34.57%	12%	6.84	2.53	7.7%	12.7%	9.87%	6.55%

KO	Coca-Cola Company	44.03	.63	57.32	20.77	2.12	8.50	3.79	17.04	30.65	25.78	2.82%	2,352.00
----	-------------------	-------	-----	-------	-------	------	------	------	-------	-------	-------	-------	----------

Food & Drug Retailing

Ticker	Company Name	Last Sale	Beta	Relative Strength Statistic	P/E Tr. 4 Qtrs	EPS Tr. 4 Qtrs	Earnings Growth Rt 3 Years	Revenue Growth Rt 3 yrs	ROA TTM	ROE TTM	ROI TTM	Indicated Yield ⁹ %	Diluted Shares MRQ
WMT	Wal-Mart Stores Inc.	44.44	.80	30.38	16.28	2.73	11.11	10.08	8.51	22.31	14.51	1.51%	4,170.00

Household Products

Ticker	Company Name	Last Sale	Beta	Relative Strength Statistic	P/E Tr. 4 Qtrs	EPS Tr. 4 Qtrs	Earnings Growth Rt 3 Years	Revenue Growth Rt 3 yrs	ROA TTM	ROE TTM	ROI TTM	Indicated Yield ⁹ %	Diluted Shares MRQ
PG	Procter & Gamble Co.	59.24	.65	61.23	22.10	2.68	13.83	14.68	8.36	20.27	11.92	2.09%	3,510.50

Tobacco

Ticker	Company Name	Last Sale	Beta	Relative Strength Statistic	P/E Tr. 4 Qtrs	EPS Tr. 4 Qtrs	Earnings Growth Rt 3 Years	Revenue Growth Rt 3 yrs	ROA TTM	ROE TTM	ROI TTM	Indicated Yield ⁹ %	Diluted Shares MRQ
MO	Altria Group Inc	80.09	.72	72.11	14.83	5.4	11.82	7.52	10.60	31.93	18.88	4.00%	2,101.00

Sector Average: **.70** **55.26** **18.50** **3.23** **11.32** **9.02** **11.13** **26.29** **17.77** **2.60%** **3,033.38**

Energy**Oil Gas & Consumable Fuels**

Ticker	Company Name	Last Sale	Beta	Relative Strength Statistic	P/E Tr. 4 Qtrs	EPS Tr. 4 Qtrs	Earnings Growth Rt 3 Years	Revenue Growth Rt 3 yrs	ROA TTM	ROE TTM	ROI TTM	Indicated Yield ⁹ %	Diluted Shares MRQ
OSG	Overseas Shipholding	64.83	1.14	77.04	5.99	10.83	68.15	45.38	12.49	23.34	14.14	1.54%	39.57
WMB	Williams Companies	24.67	1.26	68.27	60.17	0.41	94.93	-10.55	.85	4.47	1.33	1.46%	607.07
XOM	Exxon Mobil Corporati	68.62	1.04	69.62	11.71	5.86	36.20	21.19	17.55	33.63	26.33	1.87%	6,126.00

Sector Average: **1.15** **71.65** **25.96** **5.70** **66.43** **18.67** **10.30** **20.48** **13.93** **1.62%** **2,257.55**

Financials



Johnson & Johnson

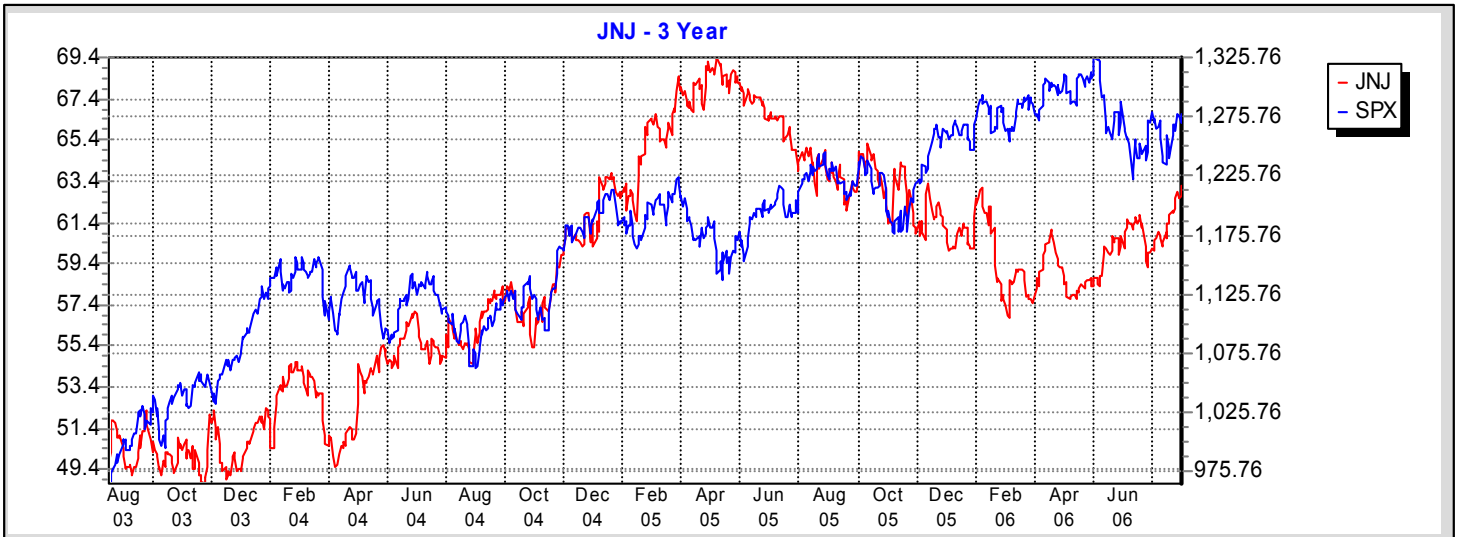
Ticker: JNJ

Exchange: NYSE

www.jnj.com/

Telemet
Valuation
Report
8/3/2006

Johnson & Johnson 3 Year Chart v. S&P 500



Valuation

Book Value MRQ	41,123,000.00
Book Value Per Share MRQ	13.83
Dividend Payout Ratio TTM	.00
Debt to Equity MRQ	.05

Profitability

Price to Sales TTM	3.75
Sales per Share G1yr	1.27
Sales to Assets TTM	.88
Sales to Assets G1yr	-1.17

Dividend

Current Dividend	.38
Indicated Dividend	1.50
Indicated Yield%	2.38%
Div Increase 5 Year	16.67

Activity

Cash Turnover	.87
Cash per Share MRQ	5.62
Total Cash MRQ (mil)	16822.00
Current Ratio	2.56

Earnings and Revenue

EPS Tr. 4 Quarters	3.59
Revenue TTM (mil)	50,674.00
P/E Tr. 4 Quarters	17.57
Net Income TTM (mil)	10,789.00

Management Effectiveness

Return on Assets TTM	18.66
Return on Equity TTM	28.58
Profit Margin TTM	21.29
Return on Investment	25.67

ROA G1yr	.86
ROE G1yr	.18
Prof. Margin G1yr	1.42
ROI G1yr	.45

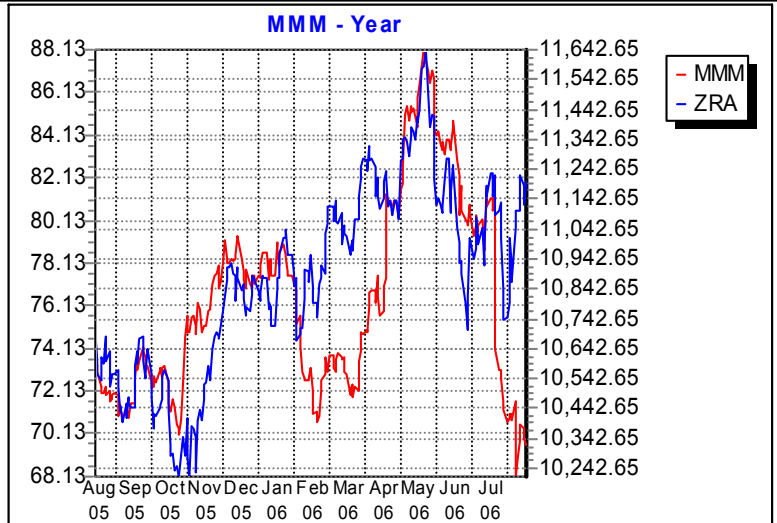
Earnings Estimates

FC - EPS Cur FY	3.69
FC - EPS Nxt FY	4.02
FC - PE Cur FY	17.10
FC - PE Nxt FY	15.69

MMM 3M Company

Last: 69.26 Net %: -0.50% Volume: 1,259,200

BRIEF: BUSINESS SUMMARY 3M Company (3M) is a diversified technology company with a global presence in the businesses, including healthcare; industrial; display and graphics; consumer and office; safety, security and protection services; electronics and telecommunications, and transportation. During the year ended December 31, 2005, 3M managed its operations in seven operating business segments: Health Care; Industrial; Display and Graphics; Consumer and Office; Electro and Communications; Safety, Security and Protection Services, and Transportation.



AA Alcoa Inc

Last: 29.49 Net %: -0.54% Volume: 1,592,700

BRIEF: BUSINESS SUMMARY Alcoa Inc. (Alcoa) is a producer of primary aluminum, fabricated aluminum and alumina that is engaged in the mining, refining, smelting, fabricating, and recycling. Aluminum and alumina represent approximately three-quarters of the Company's revenues, and the price of aluminum influences the operating results. Nonaluminum products include precision castings, industrial fasteners, vinyl siding, consumer products, food service and flexible packaging products, plastic closures, and electrical distribution systems for cars and trucks. Alcoa's products are used worldwide in aircraft, automobiles, commercial transportation, packaging, consumer products, building and construction, and industrial applications. Alcoa's operations consist of six worldwide segments: Alumina, Primary Metals, Flat-Rolled Products, Extruded and End Products, Engineered Solutions and Packaging and Consumer.

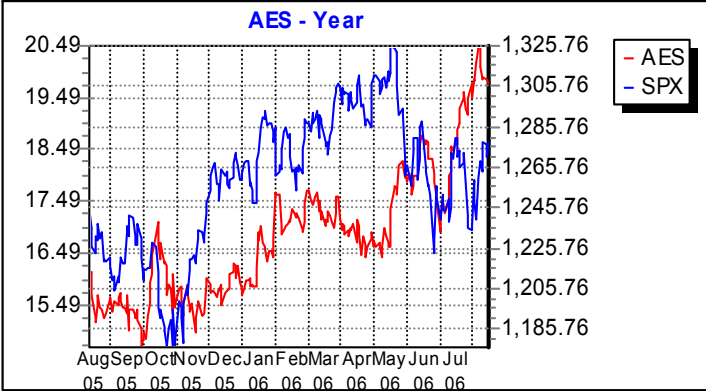




AES AES Corporation

Last: 19.71

Volume: 753,200

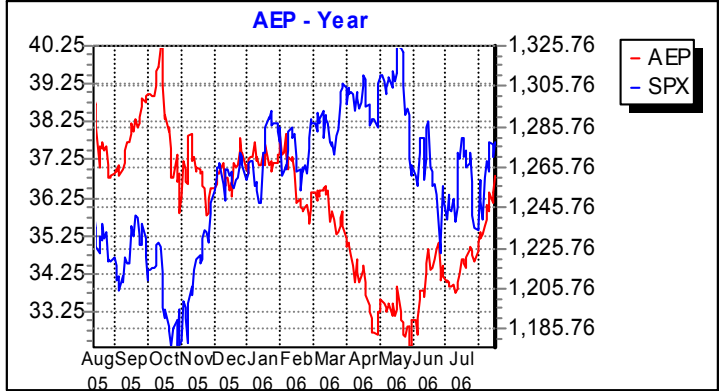


BRIEF: BUSINESS SUMMARY The AES Corporation a global power company is a holding company that through its subsidiaries, operates a portfolio of electricity generation and distribution businesses. The Company operates in two types of businesses within the power sector: it generates power for sale to utilities and other wholesale customers; the Company operates utilities that distribute power to retail, commercial, industrial and governmental customers typically through integrated transmission and distribution systems. It is also engaged in exploring and promoting a set of related activities that include alternative energy businesses, such as wind generation, the supply of liquefied natural gas to certain targeted North American markets, the production of greenhouse gas reduction activities and related industries involving environmental issues and the application of new energy technologies. The business segments of the Company include Contract Generation, Competitive Supply and Regulated Utilities.

AEP American Electric Power

Last: 36.9787

Volume: 704,900



BRIEF: BUSINESS SUMMARY American Electric Power Company, Inc. (AEP) is a public utility holding company that owns, directly or indirectly, all of the outstanding common stock of its public utility subsidiaries and varying percentages of other subsidiaries. The public utility subsidiaries of AEP are American Electric Power Company, Inc., AEP Generating Company, AEP Texas Central Company, AEP Texas North Company, Appalachian Power Company, Columbus Southern Power Company, Indiana Michigan Power Company, Kentucky Power Company, Ohio Power Company, Public Service Company of Oklahoma and Southwestern Electric Power Company. The service areas of AEP's public utility subsidiaries cover portions of the states of Arkansas, Indiana, Kentucky, Louisiana, Michigan, Ohio, Oklahoma, Tennessee, Texas, Virginia and West Virginia.



Telemet
Equity Characteristics
By Market Capital

Aug 3, 2006

Page 1

Symbol	Company Name	Price Per Share	P/E Fiscal Year	P/E 4th Qtr	FC EPS Fiscal Year	FC EPS 4th Qtr	Growth Rate 1 Year	Growth Rate 3 Year	Earnings Fiscal (mils)	Earnings 4th Qtr (mils)	Market Capital (mils)	Revenue FY (mils)	Dividend Yield	Net % 3 Month	Relative Strength
XOM	Exxon Mobil Corporati	68.56	12.01	11.70	5.71	5.86	36.92	36.20	8,400.00	36,670.00	420,367.82	370,680.00	1.87%	0.12%	69.62
GE	General Electric Co	32.75	21.27	20.73	1.54	1.58	-3.66	4.75	9,159.00	16,693.00	340,600.00	149,702.00	3.05%	-0.01%	35.23
MSFT	Microsoft Corporation	24.26	35.16	19.26	0.69	1.26	22.33	27.18	9,771.00	13,471.00	252,688.73	32,187.00	1.48%	0.04%	41.57
C	Citigroup, Inc.	48.44	10.18	10.01	4.76	4.84	46.67	21.25	5,639.00	24,787.00	243,886.73	83,642.00	4.05%	0.00%	59.81
PG	Procter & Gamble Co.	59.14	22.23	22.07	2.66	2.68	3.88	13.83	6,786.00	8,289.00	207,610.97	56,741.00	2.10%	0.06%	61.23
JNJ	Johnson & Johnson	63.09	18.23	17.57	3.46	3.59	20.47	14.31	6,125.00	10,789.00	187,654.90	50,514.00	2.38%	0.05%	58.22
PFE	Pfizer Inc.	25.55	23.44	15.87	1.09	1.61	29.84	26.05	4,111.00	11,895.00	187,128.93	51,298.00	3.76%	0.09%	52.65
WMT	Wal-Mart Stores Inc.	44.46	16.59	16.29	2.68	2.73	9.64	11.11	2,615.00	11,385.00	185,398.20	315,654.00	1.51%	-0.08%	30.38
MO	Altria Group Inc	80.01	16.03	14.82	4.99	5.40	13.92	11.82	3,477.00	11,316.00	168,101.01	97.85	4.00%	0.09%	72.11
JPM	JPMorgan Chase & Co	45.50	19.12	17.43	2.38	2.61	96.24	43.47	3,077.00	9,301.00	162,471.40	54,533.00	2.99%	0.08%	71.21
AIG	American Intl Group	59.86	15.00	16.40	3.99	3.65	-13.92	-2.71	3,195.00	9,873.00	157,072.64	43,862.00	1.10%	0.01%	37.21
T	AT&T Inc.	30.78	21.68	20.38	1.42	1.51	2.03	1.39	1,445.00	5,346.00	120,103.56	91,134.00	4.32%	0.10%	76.94
IBM	IBM Corp	76.29	15.54	14.81	4.91	5.15	4.89	0.57	3,730.00	8,240.00	117,341.65	91,134.00	1.57%	-0.01%	29.58
KO	Coca-Cola Company	43.99	21.56	20.75	2.04	2.12	6.00	8.50	2,942.00	4,976.00	103,464.48	23,104.00	2.82%	0.02%	57.32
INTC	Intel Corporation	17.26	12.33	13.48	1.40	1.28	42.22	-6.68	2,232.00	7,833.00	101,281.68	38,826.00	2.32%	-0.09%	16.17
VZ	Verizon Communication	33.36	12.59	12.98	2.65	2.57	-14.05	42.20	1,632.00	7,272.00	98,845.68	75,112.00	4.86%	0.00%	52.92
HPQ	Hewlett-Packard Co	32.49	39.62	35.32	0.82	0.92	-9.09	16.88	3,126.00	3,172.00	93,798.63	86,696.00	0.98%	0.03%	72.66
MRK	Merck & Co. Inc.	40.93	19.49	18.77	2.10	2.18	-13.15	-13.68	1,520.00	4,781.20	89,653.88	22,011.90	3.71%	0.12%	80.42
LPS	United Parcel Service Inc.	67.84	19.55	18.95	3.47	3.58	17.76	12.42	975.00	3,963.00	74,624.00	42,581.00	2.24%	-0.18%	26.19
HD	Home Depot Inc.	33.99	12.50	11.97	2.72	2.84	60.45	10.73	1,484.00	6,075.00	72,126.78	81,511.00	1.77%	-0.05%	20.77
AXP	American Express Co.	51.66	17.39	17.75	2.97	2.91	3.19	6.40	873.00	3,661.00	64,988.28	24,267.00	1.16%	-0.03%	57.49
LTX	United Technologies	62.72	20.70	19.97	3.03	3.14	10.56	15.91	1,871.00	3,186.00	63,284.48	42,725.00	1.69%	-0.01%	68.93
BA	Boeing Company	78.52	24.54	22.96	3.20	3.42	55.45	4.05	692.00	2,729.00	62,172.14	54,845.00	1.53%	-0.04%	61.73
DIS	Walt Disney Company	29.81	24.43	22.25	1.22	1.34	50.56	10.05	1,467.00	2,579.00	59,321.90	31,944.00	0.91%	-0.01%	68.89
MMM	3M Company	69.28	16.82	16.26	4.12	4.26	9.79	10.96	899.00	3,289.00	53,252.07	21,167.00	2.66%	-0.14%	26.80
CAT	Caterpillar Inc	71.37	17.67	16.15	4.04	4.42	43.97	56.35	840.00	3,113.00	49,894.77	36,339.00	1.68%	-0.04%	69.02
MCD	McDonalds Corporatio	35.72	17.51	18.13	2.04	1.97	1.03	20.21	625.30	2,499.60	45,407.26	20,460.20	1.88%	0.06%	64.44
EXC	Exelon Corp	58.81	42.31	48.20	1.39	1.22	-56.27	-13.98	400.00	795.00	39,696.75	15,357.00	2.72%	0.03%	64.91
DD	DuPont de Nemour	39.68	19.17	20.24	2.07	1.96	-5.31	97.06	817.00	1,903.00	36,839.27	28,491.00	3.73%	-0.05%	29.12
FDX	FedEx Corp	103.41	17.74	17.74	5.83	5.83	23.52	56.23	0.00	1,806.00	32,263.92	21,446.00	0.35%	-0.12%	63.02
HON	Honeywell Intl Inc	38.48	19.84	18.86	1.94	2.04	15.91	13.61	436.00	1,732.00	32,169.28	10,437.00	2.52%	0.09%	80.48
TXU	TXU Corporation	65.40	18.56	17.19	3.52	3.80	-457.18	28.12	576.00	1,872.00	30,999.60	16,746.00	4.17%	0.05%	62.23
DUK	Duke Energy Corp Holding	30.72	17.07	22.59	1.80	1.36	-35.85	36.23	358.00	1,311.00	29,583.36	16,746.00	4.17%	0.05%	62.23
D	Dominion Resources	77.95	25.98	23.77	3.00	3.28	-11.35	26.33	534.00	1,138.00	27,134.40	18,041.00	3.54%	0.04%	57.56
BNI	Burlington North SF	68.87	17.17	16.13	4.01	4.27	76.45	62.91	410.00	1,620.00	25,943.33	12,987.00	1.45%	-0.13%	61.02
AA	Alcoa Inc	29.53	21.09	13.86	1.40	2.13	47.92	32.32	1,352.00	1,865.00	25,897.96	26,159.00	2.03%	-0.09%	42.53
SO	Southern Company	33.67	15.81	16.43	2.13	2.05	0.00	-6.90	2,620.00	1,530.00	24,984.92	13,558.00	4.60%	0.05%	58.61
UNP	Union Pacific Corp.	84.62	21.98	18.76	3.85	4.51	109.77	-5.06	311.00	1,209.00	22,884.13	13,078.00	1.42%	-0.09%	62.32
FE	FisrEnergy Corporation	56.21	21.54	20.08	2.61	2.80	6.87	18.75	221.00	921.35	18,549.30	12,060.00	3.20%	0.04%	70.75
NSC	Norfolk Southern Corp	42.31	13.60	12.52	3.11	3.38	42.02	60.14	305.00	1,392.00	17,845.22	8,527.00	1.70%	-0.20%	43.13
GM	General Motors Corp.	30.81	24.85	29.46	-15.13	-15.84	-1803.23	-35.59	445.00	-8,839.00	17,577.47	192,604.00	3.25%	0.03%	76.22
PEG	Public Svc Ent Grp	68.34	24.85	29.46	2.75	2.32	-25.64	-4.49	203.00	579.00	17,294.46	12,430.00	3.34%	0.03%	66.85



Symbol	Name	PRICE PER SHR 8/3/2006	RELATIVE STRENGTH NUMBER	BETA S&P 500	P/E LATEST 4 QTRS	EPS NEXT FY (est)	5 Yr. ERNGS GRWTH	MRKT CAP (MILS) 8/3/2006	LONG TERM DEBT TO ASSETS	DIVIDEND YIELD	ROE	ROA	PRICE TO BOOK	BOOK VALUE
MMM	3M Company	69.34	-0.24	0.87	16.28	4.98	19.50%	53,295	5.64%	2.65%	31.75%	15.84%	4.760	1098900000
AA	Alcoa Inc	29.52	-0.17	1.37	13.86	3.30	63.28%	25,889	12.6%	2.03%	13.47%	5.41%	1.788	1436500000
AXP	American Express Co.	51.67	0.05	0.99	17.76	3.37	17.40%	65,001	21.94%	1.16%	30.37%	2.77%	6.003	1060500000
AIG	American Intl Group	59.85	-0.26	1.03	16.40	6.13	18.97%	157,046	%	1.1%	14.61%	1.47%	.000	0
BA	Boeing Company	78.50	0.90	1.06	22.95	4.54	173.58	62,156	12.76%	1.53%	18.91%	3.32%	5.764	1036900000
CAT	Caterpillar Inc	71.34	0.60	1.33	16.14	6.18	94.71%	49,874	24.27%	1.68%	37.18%	6.7%	5.349	8962000000
C	Citigroup, Inc.	48.45	-0.15	0.94	10.01	4.62	14.32%	243,937	%	4.05%	21.01%	1.63%	2.102	1134180000
KO	Coca-Cola Company	44.00	-0.25	0.63	20.75	2.50	12.10%	103,488	3.62%	2.82%	30.65%	17.04%	.000	1712200000
DD	DuPont de Nemour	39.68	-0.30	0.98	20.24	3.16	-23.41	36,839	16.31%	3.73%	17.76%	5.3%	3.958	9236000000
PFE	Pfizer Inc.	25.55	-0.41	0.94	15.87	2.13	13.43%	187,128	5.45%	3.76%	17.8%	10.5%	2.691	6945000000
XOM	Exxon Mobil Corporati	68.55	0.46	1.04	11.70	6.30	43.57%	420,307	2.81%	1.87%	33.63%	17.55%	3.699	1124630000
GE	General Electric Co	32.75	-0.11	0.96	20.73	2.26	6.33%	340,600	25.18%	3.05%	15.41%	2.53%	3.120	1087730000
GM	General Motors Corp.	30.81	-0.34	1.19	17.57	5.08	-20.93	17,577	%	3.25%	-46.77	-1.89%	1.131	1542500000
HPQ	Hewlett-Packard Co	32.49	0.23	1.23	35.32	2.32	16.27%	93,799	3.02%	.98%	9.81%	4.75%	2.463	3705400000
HD	Home Depot Inc.	33.99	-0.15	1.13	11.97	3.40	16.59%	72,127	11.21%	1.77%	23%	13.17%	2.585	2779900000
HON	Honeywell Intl Inc	38.48	0.05	1.18	18.86	2.92	16.06%	32,169	10.74%	2.36%	17.49%	6.03%	2.901	1097800000
INTC	Intel Corporation	17.25	-0.45	1.43	13.48	1.05	28.21%	101,223	4.14%	2.32%	21.66%	16.57%	2.939	3435800000
IBM	IBM Corp	76.25	-0.28	0.83	14.81	6.36	12.60%	117,280	11.83%	1.57%	26.02%	8.17%	3.496	3354900000
VZ	Verizon Communication	33.35	-0.28	0.76	12.98	2.68	42.10%	98,816	15.92%	4.86%	13.62%	4.22%	2.171	4477100000
JPM	JPMorgan Chase & Co	45.50	0.05	1.12	17.43	3.95	127.53	162,471	%	2.99%	8.71%	.77%	1.458	1083370000
JNJ	Johnson & Johnson	63.08	-0.04	0.51	17.57	4.02	17.24%	187,626	3.09%	2.38%	28.58%	18.66%	4.563	4112300000
MCD	McDonalds Corporatio	35.72	0.22	0.86	18.13	2.43	-16.52	45,407	22.73%	1.88%	16.89%	8.74%	2.954	1516700000
MRK	Merck & Co. Inc.	40.94	-0.39	0.73	18.78	2.44	-10.85	89,679	9.88%	3.71%	26.59%	10.92%	4.745	1884620000
MSFT	Microsoft Corporation	24.27	-0.22	0.94	19.26	0.00	10.44%	252,771	%	1.48%	29.5%	19.5%	5.948	4203800000
MO	Altria Group Inc	80.03	0.50	0.72	14.82	5.65	2.42%	168,143	13.29%	4%	31.93%	10.6%	4.368	3814400000
PG	Procter & Gamble Co.	59.16	0.01	0.65	22.07	2.99	18.50%	207,681	19.93%	2.1%	20.27%	8.36%	3.043	6356400000
T	AT&T Inc.	30.76	-0.01	0.75	20.37	2.46	-7.03%	120,026	15.17%	4.32%	11.23%	4.28%	2.168	5508900000
UTX	United Technologies	62.74	0.26	0.98	19.98	4.11	15.00%	63,305	12.56%	1.69%	19.36%	7.05%	3.343	1844800000
WMT	Wal-Mart Stores Inc.	44.45	-0.39	0.80	16.28	3.29	12.54%	185,357	17.13%	1.51%	22.31%	8.51%	3.474	5331400000
DIS	Walt Disney Company	29.84	0.04	1.03	22.27	1.64	34.57%	59,382	16.4%	.9%	9.87%	4.81%	2.212	2695000000
	AVERAGE:	46.61	-0.35	0.97	17.24	3.54	25.62%	127,347	10.59%	2.45%	19.09%	8.11%	3.17	3899020666



Symbol	Name	Last	Net	Net %	Open	High	Low	Volume	SP Sector
Aerospace & Defense									
BA	Boeing Company	78.50	-0.12	-0.15%	77.88	78.73	77.42	783,600	Industrials
HON	Honeywell Intl Inc	38.49	-0.12	-0.31%	38.35	38.53	38.05	1,387,000	Industrials
UTX	United Technologies	62.74	0.45	0.72%	62.25	63.10	61.75	1,266,400	Industrials
Average:				<u>0.09%</u>				<u>1,145,667</u>	
Air Freight & couriers									
CHRW	C.H. Robinson Worldwide, Inc.	45.76	0.19	0.42%	45.55	45.99	44.80	239,178	Industrials
EXPD	Expeditors Intl of WA	40.39	-0.13	-0.32%	40.56	40.88	39.55	515,832	Industrials
FDX	FedEx Corp	103.37	0.05	0.05%	101.61	104.00	101.61	626,300	Industrials
UPS	United Parcel Service Inc.	67.76	-0.33	-0.48%	67.84	68.13	67.49	2,160,500	Industrials
Average:				<u>-0.09%</u>				<u>885,453</u>	
Airlines									
AMR	AMR Corporation	21.18	0.32	1.53%	20.90	21.32	20.61	1,980,900	Industrials
CAL	Continental Airlines cl B	25.99	0.51	2.00%	25.61	26.18	25.52	1,571,600	Industrials
JBLU	JetBlue Airways Corp	10.63	0.21	2.02%	10.38	10.86	10.29	1,162,438	Industrials
LUV	Southwest Airlines Co	17.71	0.06	0.34%	17.75	17.75	17.57	1,369,900	Industrials
Average:				<u>1.47%</u>				<u>1,521,210</u>	
Automobiles									
GM	General Motors Corp.	30.81	-0.80	-2.53%	31.10	31.17	30.76	2,626,500	Consumer Discretionary
Average:				<u>-2.53%</u>				<u>2,626,500</u>	
Beverages									
KO	Coca-Cola Company	44.00	-0.31	-0.70%	44.20	44.35	43.98	1,670,900	Consumer Staples
Average:				<u>-0.70%</u>				<u>1,670,900</u>	
Chemicals									
DD	DuPont de Nemour	39.68	0.02	0.05%	39.66	39.83	39.50	812,000	Materials
Average:				<u>0.05%</u>				<u>812,000</u>	
Computers & Peripherals									
HPQ	Hewlett-Packard Co	32.50	0.00	0.00%	32.45	32.62	32.08	2,878,100	Information Technology
IBM	IBM Corp	76.28	-0.04	-0.05%	76.00	76.54	74.90	1,136,800	Information Technology
Average:				<u>-0.03%</u>				<u>2,007,450</u>	
Consumer Finance									
AXP	American Express Co.	51.69	-0.08	-0.15%	51.40	51.79	51.40	1,202,200	Financials
Average:				<u>-0.15%</u>				<u>1,202,200</u>	



Portfolio Holding
Analytics by
Telemet

8/3/2006
Page 1

Ticker	Company Name	Price	High	Low	Book Value	Price to Bk. Va	Revenue per Share	Price to Sales	CF per Share	Price per CF	FCF per Share	Price to FCF	P/E Est 2006	P/E Est. 2007
MMM	3M Company	69.34	88.35	67.05	10989	4.76	27.88	2.49	5.00	13.87	3.31	20.95	15.48	13.92
AA	Alcoa Inc	29.49	36.96	22.28	14365	1.79	32.29	.91	2.30	12.82	-1.27	-23.15	9.05	8.94
AXP	American Express	51.7	55	46.59	10605	6.01	19.85	2.61	6.54	7.91	6.06	8.53	17.29	15.34
AIG	American Intl	59.87	71.09	57.52	N/A	N/A	N/A	N/A	N/A	N/A	8.20	7.30	10.93	9.77
BA	Boeing Company	78.53	89.58	62.01	10369	5.77	71.01	1.11	9.43	8.33	8.50	9.24	30.8	17.3
CAT	Caterpillar Inc	71.42	82.03	48.25	89620	5.36	53.03	1.35	4.91	14.55	2.19	32.56	13.01	11.56
C	Citigroup, Inc.	48.48	50.72	42.91	11341	2.1	15.66	3.1	N/A	N/A	N/A	N/A	11.33	10.49
KO	Coca-Cola	44	44.79	39.36	17122		9.81	4.49	2.38	18.48	N/A	N/A	19.05	17.6
DD	DuPont de	39.66	45.75	37.6	92360	3.96	28.93	1.37	2.21	17.92	.75	52.92	13.82	12.55
PFE	Pfizer Inc.	25.56	26.95	20.27	69450	2.69	6.89	3.71	2.10	12.16	1.30	19.61	12.78	12
XOM	Exxon Mobil	68.59	69.23	54.5	11246	3.7	60.13	1.14	7.93	8.65	6.75	10.16	10.82	10.89
GE	General Electric	32.77	36.34	32.06	10877	3.12	13.88	2.36	3.26	10.05	2.23	14.67	16.47	14.5
GM	General Motors	30.82	36.44	18.33	15425	1.13	351.57	.09	-17.52	-1.76	-19.27	-1.60	7.55	6.07
HPQ	Hewlett-Packard	32.5	34.52	23.66	37054	2.46	30.66	1.06	3.30	9.84	2.54	12.77	15.78	14.01
HD	Home Depot Inc.	34	43.95	32.85	27799	2.59	39.27	.87	3.27	10.39	1.06	31.96	11.07	10
HON	Honeywell Intl	38.48	44.48	32.68	10978	2.9	34.82	1.11	3.23	11.92	1.93	19.93	15.33	13.18
INTC	Intel Corporation	17.25	27.55	16.75	34358	2.94	6.26	2.76	2.15	8.02	1.82	9.50	21.56	16.43
IBM	IBM Corp	76.28	89.94	72.73	33549	3.5	55.85	1.37	9.70	7.86	9.20	8.29	13.04	11.99
VZ	Verizon	33.34	35.17	29.13	44771	2.17	27.92	1.19	8.45	3.94	1.33	25.14	13.07	12.44
JPM	JPMorgan Chase	45.53	46.8	32.92	10833	1.46	13.46	3.38	N/A	N/A	N/A	N/A	12.75	11.53
JNJ	Johnson &	63.12	65.33	56.65	41123	4.57	16.83	3.75	3.70	17.07	N/A	N/A	17.11	15.7
MCD	McDonalds	35.74	36.75	31.09	15167	2.96	16.32	2.19	3.27	10.93	N/A	N/A	15.34	14.71
MRK	Merck & Co. Inc.	40.99	41.76	25.5	18846	4.75	10.03	4.09	3.45	11.90	1.36	30.24	16.66	16.8
MSFT	Microsoft	24.29	28.38	21.45	42038	5.95	3.99	6.08	.80	30.39	.63	38.41	16.75	
MO	Altria Group Inc	80.01	80.98	66.04	38144	4.37	47.13	1.7	5.19	15.42	N/A	N/A	15.04	14.16
PG	Procter & Gamble	59.27	62.5	52.75	63564	3.05	20.8	2.85	3.31	17.92	1.43	41.46	22.54	19.82
T	AT&T Inc.	30.75	30.59	21.75	55089	2.17	14.24	2.16	4.08	7.53	.96	31.87	13.85	12.5
UTX	United	62.81	66.39	49.2	18448	3.35	44.52	1.41	4.04	15.55	2.18	28.85	17.16	15.28
WMT	Wal-Mart Stores	44.46	50.87	42.31	53314	3.47	77.68	.57	4.52	9.85	3.61	12.33	15.23	13.51
DIS	Walt Disney	29.91	31.03	22.89	25950	2.22	15.82	1.89	2.59	11.53	N/A	N/A	20.21	18.24
Averages					38990	3.17	38.88	2.1	3.12	10.77	1.56	14.73	15.36	13.04

Ticker	Company Name	Earnings Per Share			Shares Outstanding (Diluted)	2005 Revenue (mil)	Div per Share	Cur. Yield	ROE	ROA	Debt to Equity	Debt to Assets
		Act. 2005	Est 2006	Est. 2007								
MMM	3M Company	4.12	4.48	4.98	768.60	21,596.00	1.76	2.65%	31.75%	15.84%	.12%	.24%
AA	Alcoa Inc	1.4	3.26	3.3	877.00	28,310.00	.60	2.03%	13.47%	5.41%	.16%	.39%
AXP	American Express Co.	2.97	2.99	3.37	1,258.00	24,927.00	.51	1.16%	30.37%	2.77%	.42%	4.35%
AIG	American Intl Group	3.99	5.48	6.13	2,637.00	97,987.00	.62	1.1%	14.61%	1.47%	N/A%	N/A%
BA	Boeing Company	3.2	2.55	4.54	761.30	56,080.00	1.15	1.53%	18.91%	3.32%	.17%	1.01%
CAT	Caterpillar Inc	4.04	5.49	6.18	699.10	37,392.00	1.05	1.68%	37.18%	6.7%	.54%	2.89%
C	Citigroup, Inc.	4.76	4.28	4.62	5,007.90	80,350.00	1.91	4.04%	21.01%	1.63%	.36%	N/A%
KO	Coca-Cola Company	2.04	2.31	2.5	2,352.00	23,290.00	1.21	2.82%	30.65%	17.04%	.04%	.07%
DD	DuPont de Nemour	2.07	2.87	3.16	929.80	28,329.00	1.48	3.73%	17.76%	5.3%	.26%	.95%
PFE	Pfizer Inc.	1.09	2	2.13	7,324.00	50,867.00	.91	3.76%	17.8%	10.5%	.1%	.17%
XOM	Exxon Mobil Corporati	5.71	6.34	6.3	6,126.00	377,609.00	1.25	1.87%	33.63%	17.55%	.03%	.06%
GE	General Electric Co	1.54	1.99	2.26	10,400.00	146,141.00	.97	3.05%	15.41%	2.53%	.6%	3.63%
GM	General Motors Corp.	-15.13	4.08	5.08	569.00	199,076.00	1.50	3.24%	-46.77	-1.89%	N/A%	N/A%
HPQ	Hewlett-Packard Co	.82	2.06	2.32	2,887.00	88,885.00	.32	.98%	9.81%	4.75%	.03%	.06%
HD	Home Depot Inc.	2.72	3.07	3.4	2,122.00	83,999.00	.50	1.76%	23%	13.17%	.13%	.24%
HON	Honeywell Intl Inc	1.94	2.51	2.92	827.50	29,313.00	.89	2.36%	17.49%	6.03%	.16%	.46%
INTC	Intel Corporation	1.4	.8	1.05	5,954.00	38,332.00	.38	2.32%	21.66%	16.57%	.05%	.07%
IBM	IBM Corp	4.91	5.85	6.36	1,560.10	88,505.00	1.00	1.57%	26.02%	8.17%	.21%	.65%
VZ	Verizon	2.65	2.55	2.68	2,963.00	79,676.00	1.62	4.86%	13.62%	4.22%	.24%	.96%
JPM	JPMorgan Chase & Co	2.38	3.57	3.95	3,570.80	47,869.00	1.36	2.99%	8.71%	0.77%	.23%	N/A%
JNJ	Johnson & Johnson	3.46	3.69	4.02	2,992.70	50,674.00	1.41	2.38%	28.58%	18.66%	.03%	.05%
MCD	McDonalds Corporatio	2.04	2.33	2.43	1,271.20	20,758.30	.67	1.87%	16.89%	8.74%	.32%	.62%
MRK	Merck & Co. Inc.	2.1	2.46	2.44	2,190.50	22,059.50	1.52	3.71%	26.59%	10.92%	.15%	.36%
MSFT	Microsoft Corporation	.69	1.45		10,415.00	42,639.00	.35	1.48%	29.5%	19.5%	N/A%	N/A%
MO	Altria Group Inc	4.99	5.32	5.65	2,101.00	98,591.00	3.20	4%	31.93%	10.6%	.22%	.61%
PG	Procter & Gamble Co.	2.66	2.63	2.99	3,510.50	64,638.00	1.18	2.09%	20.27%	8.36%	.28%	.58%
T	AT&T Inc.	1.42	2.22	2.46	3,902.00	49,449.00	1.32	4.33%	11.23%	4.28%	.22%	.57%
UTX	United Technologies	3.03	3.66	4.11	1,009.00	45,045.00	.97	1.69%	19.36%	7.05%	.18%	.47%
WMT	Wal-Mart Stores Inc.	2.68	2.92	3.29	4,170.00	324,442.00	.67	1.51%	22.31%	8.51%	.25%	.65%
DIS	Walt Disney Company	1.22	1.48	1.64	1,990.00	32,330.00	.27	.9%	9.87%	4.81%	.24%	.49%
Averages		2.1	3.22	3.54	3,104.87	79,305.29	1.08	2.45%	19.09%	8.11%	.69	.19

Symbol	Name	Last	Net	Net %	Open	High	Low	Dividend	X-Date
AES	AES Corporation	19.66	-0.09	-0.46	19.75	19.85	19.65	0.00	
AMR	AMR Corporation	21.17	0.31	1.49	20.90	21.32	20.61	0.00	
CAL	Continental Airlines cl B	25.99	0.51	2.00	25.61	26.18	25.52	0.00	
JBLU	JetBlue Airways Corp	10.64	0.22	2.11	10.38	10.86	10.29	0.00	
YRCW	YRC Worldwide, Inc.	38.27	0.08	0.21	38.11	38.30	37.68	0.00	
MCD	McDonalds Corporatio	35.73	0.14	0.39	35.35	35.77	35.15	0.67	11/10/2005
DIS	Walt Disney Company	29.86	0.06	0.20	29.51	29.91	29.39	0.27	12/08/2005
GM	General Motors Corp.	30.82	-0.79	-2.50	31.10	31.17	30.76	1.00	05/10/2006
UPS	United Parcel Service Inc.	67.75	-0.34	-0.50	67.84	68.13	67.49	1.52	05/11/2006
MMM	3M Company	69.33	-0.28	-0.40	69.61	69.71	69.21	1.84	05/17/2006
R	Ryder System Inc.	50.12	0.31	0.62	49.00	50.49	49.00	0.72	05/18/2006
EXPD	Expeditors Intl of WA	40.37	-0.15	-0.37	40.56	40.88	39.55	0.22	05/30/2006
D	Dominion Resources	77.91	-0.24	-0.31	77.95	78.20	77.56	2.76	05/31/2006
TXU	TXU Corporation	65.35	-0.37	-0.56	65.25	65.70	65.10	1.65	05/31/2006
HD	Home Depot Inc.	34.01	-0.10	-0.29	33.80	34.19	33.52	0.60	06/06/2006
CHRW	C.H. Robinson Worldwide, Inc.	45.84	0.27	0.59	45.55	45.99	44.80	0.52	06/07/2006
FDX	FedEx Corp	103.30	-0.02	-0.02	101.61	104.00	101.61	0.36	06/08/2006
MO	Altria Group Inc	80.01	0.01	0.01	79.25	80.54	79.18	3.20	06/13/2006
GE	General Electric Co	32.76	0.16	0.49	32.55	32.78	32.43	1.00	06/22/2006
EIX	Edison International	42.35	-0.17	-0.40	42.50	42.93	42.33	1.08	06/28/2006
PCG	PG&E Corporation	41.12	-0.84	-2.00	41.40	41.73	41.04	1.32	06/29/2006
JPM	JPMorgan Chase & Co	45.54	0.05	0.11	45.15	45.58	45.10	1.36	07/03/2006
AXP	American Express Co.	51.70	-0.07	-0.14	51.40	51.79	51.40	0.60	07/05/2006
VZ	Verizon Communication	33.34	-0.19	-0.57	33.31	33.45	33.14	1.62	07/06/2006
T	AT&T Inc.	30.74	0.16	0.52	30.33	30.87	30.26	1.33	07/06/2006
CAT	Caterpillar Inc	71.43	0.68	0.96	70.25	71.47	69.92	1.20	07/18/2006
PG	Procter & Gamble Co.	59.31	1.02	1.75	58.46	59.33	58.13	1.24	07/19/2006
IBM	IBM Corp	76.19	-0.13	-0.17	76.00	76.54	74.90	1.20	07/27/2006
NI	NiSource Inc	22.20	-0.06	-0.27	22.16	22.40	22.16	0.92	07/27/2006
JBHT	J.B. Hunt Transport S	20.67	-0.12	-0.58	20.76	20.87	20.43	0.32	07/31/2006
ALEX	Alexander & Baldwin	41.49	0.05	0.13	41.46	42.21	41.22	1.00	08/01/2006
AA	Alcoa Inc	29.53	-0.12	-0.40	29.45	29.72	29.27	0.60	08/02/2006
NSC	Norfolk Southern Corp	42.34	-0.37	-0.87	41.98	42.77	41.93	0.72	08/02/2006
C	Citigroup, Inc.	48.47	0.24	0.50	48.24	48.53	48.20	1.96	08/03/2006
FE	FirstEnergy Corporation	56.09	-0.02	-0.04	56.25	56.68	56.09	1.80	08/03/2006
INTC	Intel Corporation	17.25	-0.24	-1.37	17.49	17.50	17.22	0.40	08/03/2006
SO	Southern Company	33.64	-0.17	-0.50	33.80	34.08	33.63	1.55	08/03/2006
OSG	Overseas Shipholding	65.02	0.29	0.45	64.48	65.03	64.22	1.00	08/04/2006
AEP	American Electric Power	36.92	0.08	0.22	36.83	37.04	36.80	1.48	08/08/2006
LSTR	Landstar System Inc.	43.49	-0.01	-0.02	43.02	43.65	42.60	0.12	08/08/2006
BA	Boeing Company	78.48	-0.14	-0.18	77.88	78.73	77.42	1.20	08/09/2006
DUK	Duke Energy Corp Holding	30.72	0.12	0.39	30.95	30.96	30.61	1.28	08/09/2006
PFE	Pfizer Inc.	25.54	-0.07	-0.27	25.58	25.71	25.42	0.96	08/09/2006
CNW	Con-way Inc.	49.43	-0.04	-0.08	49.20	49.70	49.05	0.40	08/10/2006
XOM	Exxon Mobil Corporati	68.57	0.09	0.13	68.07	68.89	68.04	1.28	08/10/2006
DD	DuPont de Nemour	39.66	0.00	0.00	39.66	39.83	39.50	1.48	08/11/2006
EXC	Exelon Corp	58.71	-0.09	-0.15	58.40	59.15	58.21	1.60	08/11/2006
CNP	CenterPoint Energy Inc	13.67	0.11	0.81	13.60	13.70	13.58	0.60	08/14/2006
ED	Consol Edison Inc	46.48	-0.33	-0.71	46.75	47.06	46.46	2.30	08/14/2006
MSFT	Microsoft Corporation	24.28	-0.02	-0.08	24.18	24.43	24.15	0.36	08/15/2006
HON	Honeywell Intl Inc	38.47	-0.14	-0.36	38.35	38.53	38.05	0.91	08/16/2006
UTX	United Technologies	62.83	0.54	0.87	62.25	63.10	61.75	1.06	08/16/2006
WMT	Wal-Mart Stores Inc.	44.45	0.08	0.18	44.27	45.13	44.17	0.67	08/16/2006
CSX	CSX Corporation	61.56	0.68	1.12	60.27	61.83	60.15	0.40	08/23/2006
WMB	Williams Companies	24.71	0.39	1.60	24.84	24.92	24.47	0.36	08/23/2006
JNJ	Johnson & Johnson	63.10	-0.05	-0.08	63.10	63.34	63.04	1.50	08/25/2006
LUV	Southwest Airlines Co	17.70	0.05	0.28	17.75	17.75	17.57	0.02	08/29/2006



Symbol	Name	Last	Net	Net %	Open	High	Low	Volume	SP Industry
INTC	Intel Corporation	17.25	-0.24	-1.3722	17.49	17.50	17.22	22,958,553	Semiconductors and
MSFT	Microsoft Corporation	24.28	-0.02	-0.0823	24.18	24.43	24.15	14,863,696	Software
PFE	Pfizer Inc.	25.55	-0.06	-0.2343	25.58	25.71	25.42	11,504,500	Pharmaceuticals
XOM	Exxon Mobil Corporati	68.58	0.10	0.1460	68.07	68.89	68.04	9,401,200	Oil Gas & Consumable Fuels
GE	General Electric Co	32.75	0.15	0.4601	32.55	32.78	32.43	8,149,200	Industrial Conglomerates
T	AT&T Inc.	30.76	0.18	0.5886	30.33	30.87	30.26	7,211,600	Diversified Telecommunication
PG	Procter & Gamble Co.	59.32	1.03	1.7670	58.46	59.33	58.13	5,187,300	Household Products
C	Citigroup, Inc.	48.48	0.25	0.5183	48.24	48.53	48.20	5,069,100	Diversified Financials Services
WMT	Wal-Mart Stores Inc.	44.45	0.08	0.1803	44.27	45.13	44.17	4,559,900	Food & Drug Retailing
HD	Home Depot Inc.	34.00	-0.11	-0.3225	33.80	34.19	33.52	4,519,700	Specialty Retail
EXC	Exelon Corp	58.74	-0.06	-0.1020	58.40	59.15	58.21	3,927,900	Electric Utilities
JPM	JPMorgan Chase & Co	45.52	0.03	0.0699	45.15	45.58	45.10	3,866,500	Diversified Financials Services
MRK	Merck & Co. Inc.	41.00	-0.03	-0.0731	41.11	41.46	40.77	3,762,500	Pharmaceuticals
PEG	Public Svc Ent Grp	68.17	-1.36	-1.9560	69.40	69.46	68.11	3,020,900	Multi-Utilities
HPQ	Hewlett-Packard Co	32.49	-0.01	-0.0308	32.45	32.62	32.08	2,941,100	Computers & Peripherals
JNJ	Johnson & Johnson	63.11	-0.04	-0.0633	63.10	63.34	63.04	2,908,800	Pharmaceuticals
DIS	Walt Disney Company	29.86	0.06	0.2013	29.51	29.91	29.39	2,798,600	Media
GM	General Motors Corp.	30.81	-0.80	-2.5308	31.10	31.17	30.76	2,655,200	Automobiles
VZ	Verizon Communication	33.33	-0.20	-0.5881	33.31	33.45	33.14	2,619,300	Diversified Telecommunication
WMB	Williams Companies	24.72	0.40	1.6447	24.84	24.92	24.47	2,488,200	Oil Gas & Consumable Fuels
UPS	United Parcel Service Inc.	67.72	-0.37	-0.5434	67.84	68.13	67.49	2,173,800	Air Freight & couriers
AIG	American Intl Group	59.84	-0.44	-0.7299	60.45	60.70	59.78	2,162,600	Insurance
AMR	AMR Corporation	21.16	0.30	1.4382	20.90	21.32	20.61	1,988,500	Airlines
MCD	McDonalds Corporatio	35.73	0.14	0.3934	35.35	35.77	35.15	1,953,700	Hotels Restaurant & Leisure
MO	Altria Group Inc	80.02	0.02	0.0250	79.25	80.54	79.18	1,788,100	Tobacco
NSC	Norfolk Southern Corp	42.35	-0.36	-0.8429	41.98	42.77	41.93	1,721,100	Railroads
KO	Coca-Cola Company	44.00	-0.31	-0.6996	44.20	44.35	43.98	1,701,100	Beverages
CAT	Caterpillar Inc	71.43	0.68	0.9613	70.25	71.47	69.92	1,699,100	Machinery
AA	Alcoa Inc	29.53	-0.12	-0.4047	29.45	29.72	29.27	1,679,800	Metals & Mining
CAL	Continental Airlines cl B	26.00	0.52	2.0408	25.61	26.18	25.52	1,591,800	Airlines
HON	Honeywell Intl Inc	38.44	-0.17	-0.4403	38.35	38.53	38.05	1,421,800	Aerospace & Defense
LUV	Southwest Airlines Co	17.70	0.05	0.2833	17.75	17.75	17.57	1,399,700	Airlines
MMM	3M Company	69.35	-0.26	-0.3735	69.61	69.71	69.21	1,351,800	Industrial Conglomerates
UTX	United Technologies	62.83	0.54	0.8669	62.25	63.10	61.75	1,308,200	Aerospace & Defense
AXP	American Express Co.	51.70	-0.07	-0.1352	51.40	51.79	51.40	1,216,200	Consumer Finance
JBLU	JetBlue Airways Corp	10.64	0.22	2.1113	10.38	10.86	10.29	1,169,408	Airlines
IBM	IBM Corp	76.20	-0.12	-0.1572	76.00	76.54	74.90	1,154,800	Computers & Peripherals
DUK	Duke Energy Corp Holding	30.70	0.10	0.3268	30.95	30.96	30.61	1,137,400	Multi-Utilities
PCG	PG&E Corporation	41.15	-0.81	-1.9304	41.40	41.73	41.04	1,104,400	Multi-Utilities
CNP	CenterPoint Energy Inc	13.67	0.11	0.8112	13.60	13.70	13.58	1,033,700	Multi-Utilities
BNI	Burlington North SF	68.97	0.64	0.9366	67.85	69.35	67.73	985,100	Railroads



SYMBOL	COMPANY NAME	PRICE PER SHR 8/3/2006	52 WEEK HI - LO	P/E CUR FY	P/E NXT FY est.	DIVIDEND LATEST 12 MONTHS	DIVIDEND YIELD	DIVIDEND PAYOUT RATIO	PRICE TO BOOK	PRICE TO FREE CASHFLOW	PRICE TO REVENUES	CASHFLOW TO EARNINGS	% OF LT DEBITO CAPITAL
ALEX	Alexander & Baldwin	41.5	56 - 39	16.1	13.58	.95	2.41%	31.03	1.74	-50.86	1.14	2.16	21.91%
AMR	AMR Corporation	21.2	29 - 10	11.03	6.19	.00	%	.00	-8.42	.00	.19	-2.82	104.38%
BNI	Burlington North SF	68.9	88 - 52	13.92	12.19	.85	1.45%	16.59	2.49	42.76	1.85	1.66	39.49%
CAL	Continental Airlines cl B	26.0	32 - 9	8.5	6.37	.00	%	.00	3.94	.00	.18	6.07	88.79%
CNW	Con-way Inc.	49.4	62 - 47	11.08	10.13	.4	.81%	9.43	3.02	-203.17	.67		%
CSX	CSX Corporation	61.4	75 - 43	13.95	12.02	.49	.65%	10.23	1.58	3070.00	385.92	1.58	34.68%
OSG	Overseas Shipholding	64.9	68 - 46	6.7	10.32	.85	1.54%	6.45	1.27	5.31	2.60	1.19	29.81%
EXPD	Expeditors Intl of WA	40.4	58 - 26	35.77	29.72	.19	.54%	.00	4.43	.00	1.10	1.38	.00%
FDX	FedEx Corp	103.3	120 - 77	15.2		.33	.35%	5.37	2.73	30.09	.99	2.04	16.35%
GMT	GATX Corporation	38.3	49 - 35	12.56	11.72	.83	2.19%	-279.72	1.88	.00	1.92	-19.92	74.62%
JBHT	J.B. Hunt Transport S	20.7	26 - 17	14.07	12.62	.3	1.55%	19.42	3.70	8.86	1.04	2	5.18%
NSC	Norfolk Southern Corp	42.3	58 - 35	12.64	11.26	.63	1.70%	26.98	4.36	10.69	1.78	1.73	40.53%
JBLU	JetBlue Airways Corp	10.6	17 - 9	-177.3	39.41	.00	%	.00	2.03	.00	.83	-2.64	71.36%
R	Ryder System Inc.	50.2	60 - 32	12.64	11.4	.68	1.43%	17.69	.00	2.01	.52	3.8	56.38%
LUV	Southwest Airlines Co	17.7	18 - 13	20.82	17.88	.02	.10%	2.68	2.03	6.96	1.72	4.45	16.26%
UPS	United Parcel Service Inc.	67.8	84 - 67	17.56	15.84	1.42	2.24%	37.42	4.44	33.63	1.70	1.51	15.41%
CHRW	C.H. Robinson Worldwide, Inc	45.9	55 - 29	30.99	26.82	.47	1.13%	27.86	9.34	35.17	1.17	1.19	.00%
UNP	Union Pacific Corp.	84.7	97 - 67	15.12	12.66	1.2	1.42%	42.36	1.62	74.63	4.06	1.65	32.30%
YRCW	YRC Worldwide, Inc.	38.2	55 - 36	6.69	6.51	.00	%	.00	1.10	.00	.23	1.67	36.10%
LSTR	Landstar System Inc.	43.5	49 - 32	21.74	18.74	.11	.28%	.00	9.36	.00	1.00	.48	25.00%
UNIVERSE AVER (\$ WT)		46.8	58 - 36	5.99	14.27	.49	.99%	-1.31	2.63	153.30	20.53		35.43%