

TELEMET QUARTERLY NEWSLETTER JUNE 2024



Message from the CEO

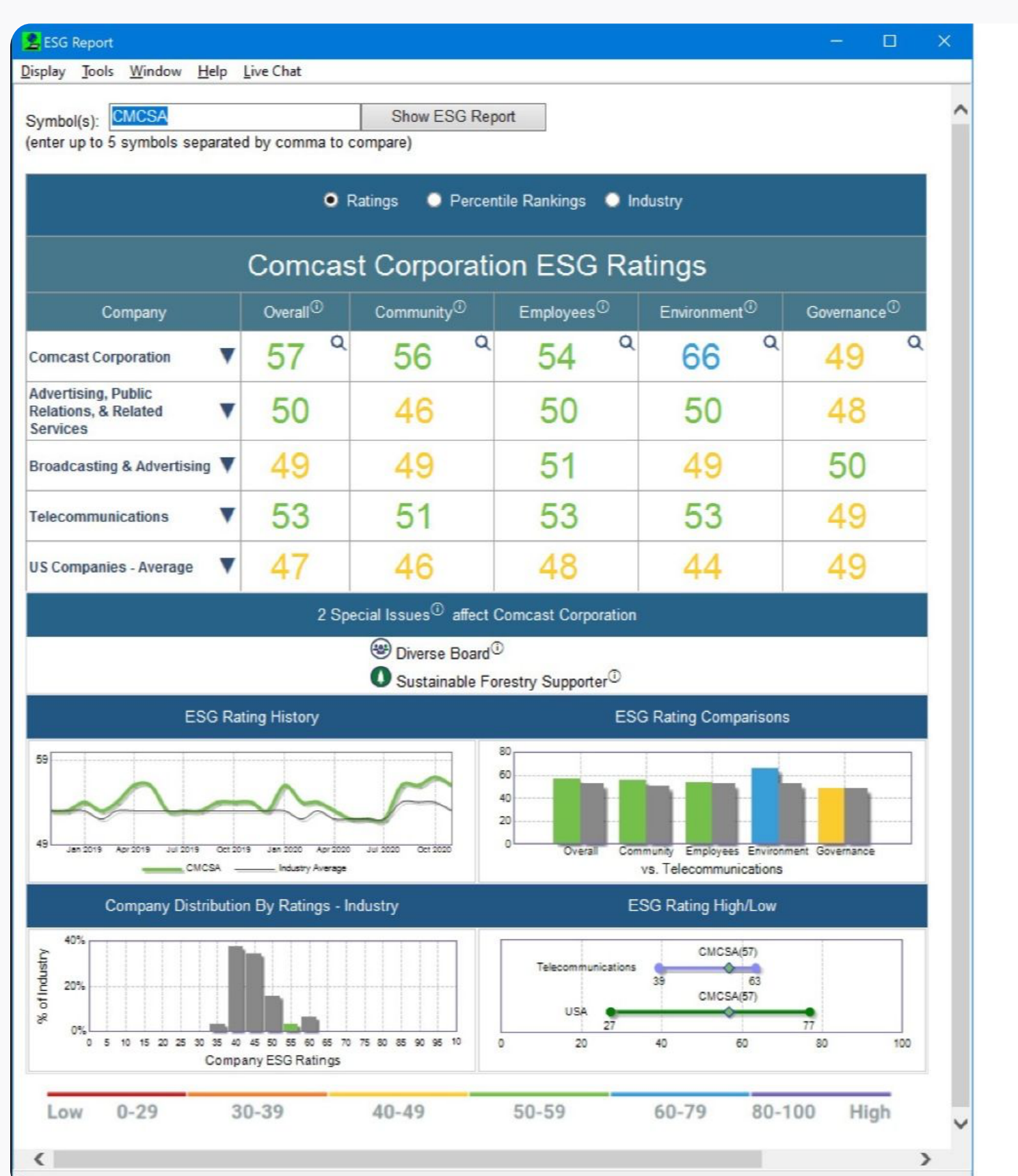
Greetings to All,

In this newsletter we announce a new offering from our ESG vendor and Telemet.

We continue our testing of integration with Pershing NetX360.

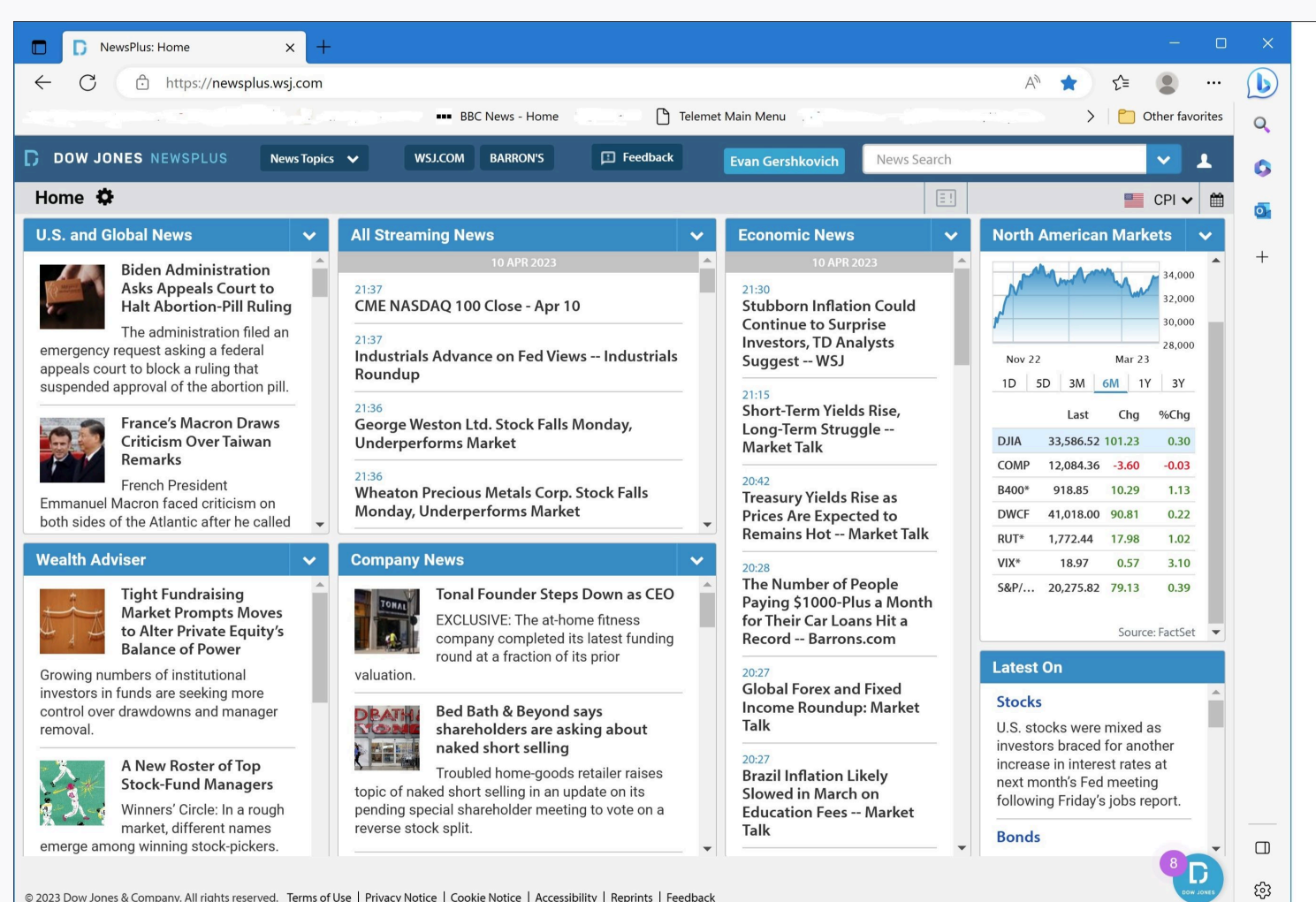
We appreciate your trust in Telemet and we look forward to continue serving you.

Fred Parsons, CEO



Enhancement from CSRHub and Telemet for ESG

Telemet and CSRHub are excited to announce an enhancement to our partnership, delivering even greater value to our clients. Telemet now provides CSRHub clients with comprehensive, exportable databases for financial statements, ratios, and historical price and dividend data. In return CSRHub provides Telemet clients with over 10 years of historical ESG ratings and rankings. This combined offering delivers exceptional value by providing robust financial and ESG insights, reinforcing investment strategies, decision-making processes, and academic research—all at a fraction of the cost of similar databases. Together, we are committed to equipping our clients with exceptional financial and ESG insights.



Dow Jones News on Telemet

Telemet's combined with the Dow Jones Broad Tape offers a comprehensive suite of financial data and news, tailored for the discerning needs of the investment professional. With the ability to filter and receive alerts on over 10,000 daily stories, users can streamline their focus to the most relevant information for their portfolios. This service not only provides real-time insights that can influence market movements but also allows customization to track specific sectors, companies, or financial events, ensuring that investors are always informed and ahead of the curve. And included with Dow Jones News is DowJonesNewsPlus, an easy-to-use newspaper-like presentation of all the day's events and analyses.

To learn more, please contact our client support team - support@taquote.com or phone 800-368-2078.



Economic Data on Telemet

Telemet presents economic data and economic metric time-series on your platform. These data are designed to enhance productivity and accuracy, eliminating the need for data re-keying by allowing downloads into MS Excel or as overlays on price charts. On a chart, overlay housing start data with Home Depot or St Joe, or perhaps overlay GDP data with S&P indices. Also our spreadsheet library features our "Economic & Market Outlook" a presentation which captures our economic time series in easy to read charts.

Unlike others who charge separately for these data, charts and presentations, Telemet bundles these in as part of our basic service, providing added significant value and convenience to all our users.

Email support@taquote.com or call 800-368-2078 for comments or questions.

New Version 8.2.7.6

The latest version of Telemet Orion is v 8.2.7.6. It is downloaded from the Telemet website. See the link below.

Important Links

- [Telemet Orion Latest Version v8.2.7.6 dated 9/05/23](#) - Select Telemet Orion software
- [Televista for Advent Axyx v 2.5.40 dated 9/4/20](#) select compatible software
- [Televista for Advent APX v1.5.31 dated 9/4/20](#) Select compatible software
- [Telemet QuoteService Standard Version v1.0.3.0](#) - Select compatible software
- [TeleFlash Proprietary Data Publisher v1.3.3.8](#) - Select compatible software
- [Mar 2024 Newsletter](#)

